



# 2016-17 Game Notes

# MISSOURI STATE

## Lady Bear Basketball

### Athletics Communications

901 S. National Avenue  
Springfield, Mo. 65897

### Ben Adamson (WBB SID)

Assistant Director  
O: 417-836-4584  
benadamson@missouristate.edu

MissouriStateBears.com

Twitter/MSULadyBears

Facebook/LadyBears

27 CONFERENCE CHAMPIONSHIPS • 1992 & 2001 FINAL FOURS • NINE ALL-AMERICANS • THREE SWEET 16 APPEARANCES • NINE ACADEMIC ALL-AMERICANS • 14 NCAA TOURNAMENT APPEARANCES • 2005 WNIT CHAMPIONS

### 2016-17 Schedule (3-6, 0-0 MVC)

Date	Opponent	Time/Result
N1	Truman State (Exh.)	W, 72-62
N6	Northeastern State (Exh.)	W, 87-46
N11	at Memphis	L, 60-69
N13	at Kansas (ESPN3)	W, 87-64
N16	at Northwestern (BTN2Go)	L, 52-75
N22	vs. USC <sup>1</sup>	L, 67-89
N23	at Alaska Anchorage <sup>1</sup>	W, 65-58
N28	Little Rock (ESPN3 <sup>A</sup> )	L, 47-58
D2	at Missouri (SECN+)	L, 49-73
D7	at Oral Roberts	L, 56-78
D11	Arkansas (KOZL)	W, 64-62
D17	North Texas (ESPN3 <sup>A</sup> )	2:05 p.m.
D19	Middle Tennessee (ESPN3 <sup>A</sup> )	6:05 p.m.
D30	UNI* (ESPN3 <sup>A</sup> )	7:05 p.m.
J1	Drake* (ESPN3 <sup>A</sup> )	2:05 p.m.
J6	Wichita State* (ESPN3)	7:00 p.m.
J13	at Evansville* (KOZL)	7:00 p.m.
J15	at Southern Illinois* (KOZL)	2:00 p.m.
J20	Illinois State* (ESPN3)	7:00 p.m.
J22	Bradley* (ESPN3 <sup>A</sup> )	2:05 p.m.
J27	at Loyola* (KOZL)	7:00 p.m.
J29	at Indiana State* (KOZL)	1:00 p.m.
F5	at Wichita State* (KOZL)	2:00 p.m.
F10	Southern Illinois* (ESPN3)	7:00 p.m.
F12	Evansville* (ESPN3 <sup>A</sup> )	7:05 p.m.
F17	at Bradley* (ESPN3)	7:00 p.m.
F19	at Illinois State* (ESPN3)	11:30 a.m.
F24	Indiana State* (ESPN3 <sup>A</sup> )	7:05 p.m.
F26	Loyola* (ESPN3 <sup>A</sup> )	2:05 p.m.
M2	at Drake* (ESPN3)	7:00 p.m.
M4	at UNI* (KOZL)	2:00 p.m.
M9-12	MVC Tournament <sup>2</sup> (ESPN3)	TBD

Home games played in JQH Arena (Springfield, Mo.)

\*Missouri Valley Conference games

EXhibition game;

<sup>1</sup>Great Alaska Shootout (Anchorage, Alaska)

<sup>2</sup>Missouri Valley Conference Tournament (Moline, Ill.)

Most regular season games broadcast on KTXR (101.3 FM); games not on KTXR can be heard on KWTO (98.7 FM); all games streamed online at [RadioSpringfield.com](http://RadioSpringfield.com)

KOZL indicates games televised locally as part of MSU TV Network

ESPN3<sup>A</sup> indicates MSU production of *The Valley on ESPN3*, available on [WatchESPN.com](http://WatchESPN.com) and the ESPN app

ESPN3 indicates MVC or opponent production of *The Valley on ESPN3*, available on [WatchESPN.com](http://WatchESPN.com) and the ESPN app

SECN+ indicates SEC Network production on ESPN3, available on [WatchESPN.com](http://WatchESPN.com) and the ESPN app

BTN2Go indicates Big Ten Network online production available at [www.btn2go.com](http://www.btn2go.com)

Times listed are Central and subject to change

[MissouriStateBears.com](http://MissouriStateBears.com)

Follow your Lady Bears on  
@MissouriStBears / @MSULadyBears  
Facebook.com/MissouriStBears & /  
LadyBears



### MISSOURI STATE Lady Bears

Overall.....	3-6
MVC.....	0-0
Home.....	1-1
Road.....	2-4
Neutral.....	0-1
AP Rank.....	NR
ESPN Rank.....	NR

Head Coach.....Kellie Harper  
Career Record.....226-177  
Missouri State Record...59-48  
vs. NT.....1-0

Last Game.....W, 64-62  
.....vs. Arkansas  
Next Game.....vs. Middle Tenn.  
.....Dec. 19, 6 p.m.



### NORTH TEXAS Mean Green

Overall.....	3-6
CUSA.....	0-0
Home.....	2-1
Road.....	1-3
Neutral.....	0-2
AP Rank.....	NR
ESPN Rank.....	NR

Head Coach.....Jalie Mitchell  
Career Record.....14-25  
NT Record.....14-25  
vs. Missouri State.....0-0

Last Game.....W, 84-61  
.....vs. Incarnate Word  
Next Game.....vs. Texas State  
.....Dec. 22, 5 p.m.

### Game Summary

Missouri State Lady Bears  
(3-6/0-0 MVC)

vs.

North Texas Mean Green  
(3-6/0-0 Conference USA)

Date: Saturday, Dec. 17, 2016

Tip: 2:02 p.m. (Central)

Location: JQH Arena

Site: JQH Arena (11,000)

Radio: KTXR 101.3 FM  
(Tom Ladd, Lynne Miller)

TV: ESPN3  
(Don West, Corey Riggs)

Live Audio: [RadioSpringfield.com](http://RadioSpringfield.com)

Live Video: ESPN3.com

Live Stats: [MissouriStateBears.com](http://MissouriStateBears.com)

### Game Overview

The Missouri State Lady Bears close out the non-conference schedule this weekend by hosting North Texas (3-6) at 2 p.m. Saturday and Middle Tennessee (2-5) at 6 p.m. Monday.

After spending the first month of the season almost exclusively on the road, the Lady Bears (3-6) opened a six-game home stand Sunday with a 64-62 win against Arkansas, and will not leave Springfield again until Jan. 13, with the six consecutive home games serving as the school's longest in-season stretch without leaving home since the end of the 1990-91 campaign.

Despite a 1-2 start to December, the Lady Bears still own a 53-30 (.639) post-November since Kellie Harper took over in 2013, including a 40-17 (.702) in such games the last two-plus seasons.

### Missouri State's Probable Starting Lineup

No.	Name	Pos.	Ht.	Yr.	PPG	RPG	Other	Notes
1	Danielle Gitzen	G	5-10	So.	4.4	3.0	2.6 apg	Holds HS record for career reb. and st.
5	Liza Fruendt	G	5-10	Jr.	15.7	3.2	37% 3FG	10+ points in 40 of 68 career games
21	Aubrey Buckley	F	6-2	Jr.	9.0	4.8	74% FT	Made 50 consecutive starts when healthy
22	Alexa Willard	G	6-2	Fr.	5.6	3.1	83% FT	All-time HS FT% leader in MO at .892
34	Rachel Swartz	F	6-3	Sr.	5.0	4.3	--	Made 20 of last 24 free throws

\*starters based on last game

### Off the Bench

2	Lexi Hughes	G	5-8	Sr.	7.8	2.9	35% 3FG	12th in MSU history in 3 FGM
3	Lee Ann Polowy	G	5-7	Jr.	3.3	2.0	--	HS record holder for career points, 3s
11	Brice Calip	G	5-8	Fr.	6.0	2.4	1.8 apg	3+ spg, 3+ apg for HS career
13	Audrey Holt	F	6-1	Jr.	3.1	2.7	--	51% of rebounds are offensive
30	Shameka Ealy	F	6-1	Fr.	3.6	3.3	0.9 bpg	22 ppg, 11 rpg, 9 bpg as HS Sr.
40	Onye Osemenam	F	6-3	Sr.	0.0	0.5	--	Averages 2.12 blocks/40 minutes in career
50	Emily Gartner	C	6-4	Fr.	--	--	--	Will likely redshirt this season

Pronunciations: Calip (KAY-lee); Ealy (EE-lee); Fruendt (rhymes with fluent); Liza (LIE-zuh); Onye (OH-nee); Osemenam (Oh-SIM-uh-nim); Polowy (puh-LOW-vee)

## Pronunciation Guide

Calip	..... KAY-lip
Ealy	.....EE-lee
Fruendt	.....Rhymes with fluent
Liza	.....LIE-zuh
Onye	.....OH-nee
Osemenam	.....Oh-SIM-uh-nim
Polowy	.....puh-LOW-vee

## Breakdown By Experience

<b>Seniors</b> .....	<b>3</b>
Lexi Hughes, Onye Osemenam Rachel Swartz	
<b>Juniors</b> .....	<b>4</b>
Aubrey Buckley, Liza Fruendt Audrey Holt, Lee Ann Polowy	
<b>Sophomores</b> .....	<b>1</b>
Danielle Gitzen	
<b>Freshmen</b> .....	<b>4</b>
Brice Calip, Shameka Ealy Emily Gartner, Alexa Willard	
<b>Returning Letterwinners</b> .....	<b>8</b>
Aubrey Buckley, Liza Fruendt Danielle Gitzen, Audrey Holt Lexi Hughes, Onye Osemenam Lee Ann Polowy, Rachel Swartz	
<b>Letterwinners Not Returning</b> .....	<b>4</b>
Hillary Chvatal, Tyonna Snow Grace Vander Weide, Kenzie Williams	
<b>Returning Starters</b> .....	<b>2</b>
Danielle Gitzen, Audrey Holt	
<b>Starters not returning</b> .....	<b>3</b>
Hillary Chvatal, Tyonna Snow Kenzie Williams	

## Breakdown By Height

<b>6-4</b> .....	Emily Gartner
<b>6-3</b> .....	Rachel Swartz Onye Osemenam
<b>6-2</b> .....	Aubrey Buckley Alexa Willard
<b>6-1</b> .....	Shameka Ealy Audrey Holt
<b>5-10</b> .....	Liza Fruendt Danielle Gitzen
<b>5-8</b> .....	Brice Calip Lexi Hughes
<b>5-7</b> .....	Lee Ann Polowy

## Breakdown By State

<b>Arkansas (1)</b>	Russellville .....	Shameka Ealy
<b>Illinois (1)</b>	Batavia .....	Liza Fruendt
<b>Kansas (2)</b>	Hiawatha .....	Emily Gartner
	Kansas City .....	Lexi Hughes
<b>Minnesota (2)</b>	Victoria .....	Danielle Gitzen
	Brooklyn Park .....	Onye Osemenam
<b>Missouri (4)</b>	Columbia .....	Audrey Holt
	Jefferson City .....	Lee Ann Polowy
	Lebanon .....	Alexa Willard
	Springfield .....	Aubrey Buckley
<b>Oklahoma (1)</b>	Sapulpa .....	Brice Calip
<b>Washington (1)</b>	Stanwood .....	Rachel Swartz

## Missouri State Numerical Roster

No.	Name	Pos.	Ht.	Yr.	Hometown (Previous School)
1	Danielle Gitzen	G	5-10	So.	Victoria, Minn. (Chanhassen High)
2	Lexi Hughes	G	5-8	Sr.	Kansas City, Kan. (Bishop Miege High)
3	Lee Ann Polowy	G	5-7	Jr.	Jefferson City, Mo. (Blair Oaks High)
5	Liza Fruendt	G	5-10	Jr.	Batavia, Ill. (Batavia High)
11	Brice Calip	G	5-8	Fr.	Sapulpa, Okla. (Sapulpa High)
13	Audrey Holt	F	6-1	Jr.	Columbia, Mo. (Rock Bridge High)
21	Aubrey Buckley	F	6-2	Jr.	Springfield, Mo. (Parkview High)
22	Alexa Willard	G	6-2	Fr.	Lebanon, Mo. (Stoutland High)
30	Shameka Ealy	F	6-1	Fr.	Russellville, Ark. (Russellville High)
34	Rachel Swartz	F	6-3	Sr.	Stanwood, Wash. (Stanwood High)
40	Onye Osemenam	F	6-3	Sr.	Brooklyn Park, Minn. (Maranatha Christian Academy)
50	Emily Gartner	C	6-4	Fr.	Hiawatha, Kan. (Hiawatha High)

**Head Coach:** Kellie Harper (Tennessee, '99), fourth year

**Assistant Coach:** Jon Harper (Auburn, '99), fourth year

**Assistant Coach:** Jackie Stiles (Missouri State, '01), fourth year

**Assistant Coach:** Jennifer Sullivan (Memphis, '05), fourth year

**Director of Basketball Operations:** Matt Bolger (Drake, '03), first year

## Series History

Missouri State is 2-0 against North Texas, winning 78-67 in Springfield in 2011 and 85-79 in Denton in 2013 during Coach Harper's first season at MSU. Lexi Hughes scored six points on 2-of-3 shooting as the only current Lady Bear to play in the 2013 contest.

## Scouting North Texas

North Texas is 3-6 overall with wins against Arizona, Iona and Incarnate Word. MSU and the Mean Green share one common opponent, as both teams lost by 11 points to Little Rock. Terrell Bradley is the Mean Green's only double-figure scorer at 12.0 points per game, while Terra Ellison averages 9.8 points and 6.0 rebounds. As a team, North Texas scores 61.7 points per game and allows 67.8 while shooting 38.6 percent overall, 32.5 percent from beyond the arc and 68.8 percent from the charity stripe.

## Scouting the Lady Bears

Missouri State has a new look in 2016-17, with junior guard Liza Fruendt leading the way in scoring at 15.7 points per game. Five Lady Bears average at least 5.0 points in a balanced offense that has seen eight different players score in double figures so far this season. MSU owns a plus-1.8 rebounding margin, with nine players grabbing between 2.4 and 4.8 boards per game. As a team, the Lady Bears average 60.8 points and allow 69.6 while shooting 36.5 percent overall, 34.2 percent on 3-pointers and 75.8 percent from the charity stripe.

## Last Time Out

Missouri State's Lexi Hughes hit a driving shot in traffic with 1.4 seconds remaining Sunday to give the Lady Bears a 64-62 victory and knock Arkansas from the ranks of the unbeaten at JQH Arena.

Hughes finished with 12 points and five assists while taking three charges, Liza Fruendt netted a season-high 23 points, including five 3-pointers, Aubrey Buckley scored a career-high 14 points and Rachel Swartz grabbed a career-high 10 rebounds as MSU opened up a six-game home stand with its second consecutive win against the Razorbacks.

Missouri State led for much of the second half after shooting 9-for-13 in the third quarter, going on a 22-12 run over the final 8:39. Fruendt's fifth trey made it 41-39 at the 5:30 mark, and the Lady Bears slowly grew the margin to as many as seven points on a Hughes jumper with 45 ticks left before Arkansas scored to make it 52-47 after three periods.

Buckley converted a three-point play with 7:27 left to maintain MSU's five-point advantage, and Hughes added a free throw with 4:47 remaining for a 57-53 score

## Table of Contents

3	..... Coach Kellie Harper/Team/Player Notes
4	..... MSU Quick Facts/Team/Player Notes
5	..... MVC Information/Team/Player Notes
6	..... Top 25 Polls/MSU Record When/Inside the Numbers
7	..... MVC Individual Statistics/NCAA Team and Player Stats
7	..... Season and Career Highs
8	..... Career Statistics

9	..... Single Game Highs and Lows
10	..... The Last Time it Happened
11	..... Game-by-Game Totals
12	..... Overall Statistics
13-15	..... Game Box Scores
16-21	..... Player Profiles in Numerical Order
22	..... MSU Single-Season Records
23	..... MSU Career Records
24	..... TV/Radio Roster

## Head Coach Kellie Harper



Head Coach  
Tennessee (1999)

Career Record  
▶ 59-48 (4th season at MSU)  
▶ 226-177 (13th season overall)

Season	School	W-L	Pct.	Conf.	Place
2004-05	Western Carolina	18-14	.563	10-10	6th
2005-06	Western Carolina	9-20	.310	8-10	5th
2006-07	Western Carolina	24-10	.706	15-3	t-1st
2007-08	Western Carolina	25-9	.735	15-3	2nd
2008-09	Western Carolina	21-12	.636	14-6	t-3rd
2009-10	N.C. State	20-14	.588	7-7	t-5th
2010-11	N.C. State	14-17	.452	4-10	10th
2011-12	N.C. State	19-16	.543	5-11	9th
2012-13	N.C. State	17-17	.500	7-11	t-8th
2013-14	Missouri State	14-17	.452	8-10	t-6th
2014-15	Missouri State	18-15	.545	13-5	3rd
2015-16	Missouri State	24-10	.706	14-4	t-2nd
2016-17	Missouri State	3-6	.333	0-0	--
<b>Total</b>	<b>13th season</b>	<b>226-177</b>	<b>.561</b>	<b>120-90</b>	<b>--</b>
<b>MSU</b>	<b>4th season</b>	<b>59-48</b>	<b>.551</b>	<b>35-19</b>	<b>--</b>

### Postseason

Season (Tournament)	Results
1995-96 (NCAA)	National Champion (6-0)
<i>Tennessee - Player</i>	
1996-97 (NCAA)	National Champion (6-0)
<i>Tennessee - Player</i>	
1997-98 (NCAA)	National Champion (6-0)
<i>Tennessee - Player</i>	
1998-99 (NCAA)	Elite Eight (3-1)
<i>Tennessee - Player</i>	
1999-00 (NCAA)	Second Round (1-1)
<i>Auburn - Admin. Asst.</i>	
2001-02 (NCAA)	First Round (0-1)
<i>Chattanooga - Assistant</i>	
2002-03 (NCAA)	First Round (0-1)
<i>Chattanooga - Assistant</i>	
2003-04 (NCAA)	Second Round (1-1)
<i>Chattanooga - Assistant</i>	
2004-05 (NCAA)	First Round (0-1)
<i>Western Carolina - Head Coach</i>	Tennessee 94, WCU 43
2006-07 (WNIT)	Second Round (1-1)
<i>Western Carolina - Head Coach</i>	WCU 91, E. Tennessee St. 63 Virginia Tech 74, WCU 64
2007-08 (WNIT)	First Round (0-1)
<i>Western Carolina - Head Coach</i>	Middle Tenn. 104, WCU 69
2008-09 (NCAA)	First Round (0-1)
<i>Western Carolina - Head Coach</i>	Vanderbilt 73, WCU 44
2009-10 (NCAA)	First Round (0-1)
<i>N.C. State - Head Coach</i>	UCLA 74, NC State 54
2011-12 (WNIT)	Second Round (1-1)
<i>N.C. State - Head Coach</i>	NC State 88, High Point 78 Appalachian St. 66, NC State 62
2012-13 (WNIT)	Second Round (1-1)
<i>N.C. State - Head Coach</i>	NC State 60, Richmond 55 James Madison 72, NC State 66
2014-15 (WNIT)	First Round (0-1)
<i>Missouri State - Head Coach</i>	Tulsa 78, Missouri State 72
2015-16 (NCAA)	First Round (0-1)
<i>Missouri State - Head Coach</i>	Texas A&M 74, Missouri St. 65
<b>Combined Record</b>	<b>26-14 (.650)</b>

### Noteworthy

- ▶ Nine postseason appearances in 12 seasons as a head coach
- ▶ Collective 28-17 record in NCAA, WNIT and conference tournament games as a head coach
- ▶ Collective 26-14 record in NCAA and WNIT games as a player, assistant coach and head coach
- ▶ 2007 Southern Conference Coach of the Year
- ▶ Three-time national champion as point guard at Tennessee
- ▶ Combined record of 471-224 with 17 postseason appearances in 21st season of NCAA basketball as a player, assistant coach and head coach
- ▶ Winner of 14 conference and national championships as a player, assistant coach and head coach
- ▶ NCAA Final Four all-tournament in 1997 and 1998, and holds the NCAA championship game record with 11 assists in 1997

## 2016-17 Awards and Honors

- Liza Fruendt
- Great Alaska Shootout all-tournament

before Arkansas evened the count at 57-all just over two minutes later. Fruendt and Swartz score on Missouri State's next two possessions for a 61-57 lead with 1:15 left before the Razorbacks scored an and-one with 10.9 ticks on the clock for a 62-62 tie to set up Hughes' heroics.

Arkansas scored the game's first five points and led 11-3 midway through the first period before MSU hit its final five shots of the quarter to pull to 18-15. A Fruendt trey at 7:31 in the second period gave the Lady Bears their first lead of the game at 23-21, and the lead changed hands five more times in the quarter before the Razorbacks closed on a 5-0 run to lead 33-30 at the break.

The MSU defense held Arkansas to 30.8 percent shooting and 5-for-18 from long range, and only trailed 40-39 in rebounding against a Razorback club that averaged a plus-12 margin per game entering the contest. The Lady Bears went 8-of-21 from long range, shot 39.3 percent overall and blocked a season-high seven shots, including three from Swartz.

### Quick Hits

- Missouri State has ranked among the MVC's top three in total rebounds, offensive rebounds and rebounding margin for six consecutive seasons. The Lady Bears rank second in offensive boards in 2016-17, and grab 37.6 percent of missed shots this year, putting them above 35.9 percent for the eighth straight year. The league average this season is 30.7 percent.
- Missouri State became the 35th Division I team to reach 800 victories on Jan. 15, 2016, and entered the 2016-17 campaign ranked 33rd on the all-time wins list.
- Missouri State has finished fourth or better in the MVC standings 18 times in 24 seasons in the league.
- MSU is 16-7 in its last 23 road games, dating to Feb. 20, 2015, a stretch that included 10 consecutive MVC road wins.
- The Lady Bears have made at least 10 free throws in eight of nine games this season, shooting 70.6 percent or higher in seven of those to rank 30th nationally in free throw accuracy at 75.8 percent. Missouri State has now made at least 10 free throws 115 of its last 136 games.
- Missouri State has played all available players in each game this season, and everyone has scored in two contests.
- Brice Calip, Shameka Ealy and Alexa Willard have all scored 10 or more points in a game at least once the season, the first time since the 2008-09 campaign that three true freshmen have reached double figures during the same season for the Lady Bears.
- Eight different Lady Bears have scored in double figures at least once this season.
- MSU is 52-22 (.703) at home since the beginning of the 2011-12 season, averaging 72.8 points in those 74 games while topping the 70-point mark 47 times and scoring 80 or more 24 times.
- The Lady Bears are 40-5 under Harper when scoring at least 70 points.
- MSU is 51-0 under Harper when leading with 5:00 left on the game clock, and 52-1 when holding a lead with two minutes remaining, with the loss coming at Loyola on Jan. 12, 2014. In fact, the Lady Bears have won 90 consecutive games in which they led when the game clock surpassed the five-minute mark, the last loss coming to Bradley on Feb. 4, 2011.

## Head Coach Kellie Harper

Kellie Harper is 59-48 in her fourth season at Missouri State and holds a 226-177 career record in her 13th season as a head coach, including four NCAA Tournament appearances and five WNIT berths in that span. She earned her 200th career coaching victory on Nov. 17, 2015 against MidAmerica Nazarene.

Her teams have historically played their best in the postseason, as she holds a collective 28-17 record in conference tournaments, NCAA Tournaments, and WNIT games. In fact, in 21 seasons as a Division I head coach, assistant coach

### Upcoming Events and Promotions

Jan. 6	We Back Pat
Jan. 20	MSU Hall of Fame Weekend
Jan. 22	Alumni Weekend/1992 Team Reunion
Feb. 10	Play 4 Kay
Feb. 12	Salute to America's Heroes
Feb. 26	Senior Night

## Missouri State Quick Facts

Location.....	901 South National Avenue
.....	Springfield, MO 65897
Year Founded .....	1905
Enrollment .....	26,000
University Switchboard .....	(417) 836-5000
President .....	Clif Smart
Faculty Athletics Representative .....	Dr. James Hutter
Director of Athletics.....	Kyle Moats (SIU Edwardsville, '88)
Basketball Facility.....	JQH Arena
Seating Capacity .....	11,000
School Colors .....	Maroon and White
Athletics Nickname .....	Lady Bears
Affiliations .....	Missouri Valley Conference

## Women's Basketball Staff

Head Coach .....	Kellie Harper (Tennessee, '99)
Coaching Record .....	59-48 (fourth year at MSU)
.....	226-177 (13th year overall)
Assistant Coaches.....	Jon Harper (Auburn, '99)
.....	Jackie Stiles (Missouri State, '01)
.....	Jennifer Sullivan (Memphis, '05)
Dir. of Operations .....	Matt Bolger (Drake, '03)
Administrative Assistant.....	Terrie Coulter
Athletic Trainer.....	Katie Schulte
Student Athletic Trainer .....	Ashlyn Wheat
Student Managers .....	Jordan Clark, Margot Dumsky
.....	Emily Stonecipher, Jordan Taylor

## Team Information

2015-16 MSU Season Record .....	24-10
Conference Record .....	14-4 in MVC (t-2nd)
Postseason.....	NCAA (first round)
Letterwinners Returning/Lost.....	8/4
Starters Returning/Lost.....	2/3

## History

First Season of competition .....	1969-70
All-Time Record.....	817-571
NCAA Tournament Appearances.....	14
.....	(1991-'92-'93-'94-'95-'96-'98-'99-'00-'01-'03-'04-'06-'16)
NCAA Tournament Record .....	14-14
WNIT Appearances .....	6 (2002-'05-'10-'11-'12-'15)
WNIT Record.....	10-5

## Athletics Communications

Office .....	(417) 836-5402
Assistant A.D. for Communications .....	Rick Kindhart
Assistant Director (WBB contact) .....	Ben Adamson
Direct Line .....	(417) 836-4584
Cell Phone .....	(405) 742-7585
E-Mail Address.....	BenAdamson@MissouriState.edu
Assistant Director .....	Eric Doennig
Graduate Assistant .....	Shannon Carrico
Graduate Assistant.....	Shelby Hild
JQH Arena Press Row.....	836-8145
Athletics Box Office .....	836-7678
Official Web Site .....	MissouriStateBears.com
Facebook .....	Facebook.com/MissouriStBears
.....	Facebook.com/LadyBears
Twitter .....	Twitter.com/MissouriStBears
.....	Twitter.com/MSULadyBears
Instagram.....	Instagram.com/MissouriStBears

## 2016-17 MVC Preseason Poll

No.	Team (1st place votes)	Points
1.	Drake (34)	392
2.	UNI (4)	317
3.	Missouri State (2)	313
4.	Southern Illinois	306
5.	Wichita State	248
6.	Indiana State	199
7.	Bradley	141
8.	Illinois State	123
9.	Evansville	109
10.	Loyola	52

## Preseason All-MVC Team

Rangie Bessard, Jr., F, Wichita State
Caitlin Ingle, Sr., G, Drake
Rishonda Napier, Sr., G, Southern Illinois
Madison Weekly, Sr., G, UNI
Lizzy Wendell, Sr., G/F, Drake

and player, Harper has made 17 postseason appearances with a combined 471-224 (.678) record, 12 NCAA Tournament appearances and five WNIT bids.

Harper was the head coach at North Carolina State from 2009-2013, directing the Wolfpack to three postseason appearances during her four years at the helm, including the 2010 NCAA Tournament.

Prior to her stint in Raleigh, Harper piloted Western Carolina to a 97-65 record and four postseason berths in five seasons, including a 70-31 mark her final three seasons in Cullowhee as the Catamounts captured the first two Southern Conference Tournament titles in school history.

The former Kellie Jolly played on three national championship clubs at Tennessee for the legendary Pat Summitt and earned honorable mention All-America honors as a senior in 1999.

Harper and her husband Jon, who has served as an assistant on her coaching staff at Western Carolina, NC State, and now at Missouri State, welcomed their first child, Jackson, in November 2013.

## High Scoring Staff

The 2016-17 Lady Bear coaching staff combined to score 5,087 points at the Division I level during their playing careers with four All-America seasons, four Final Four appearances and three national championships.

Head Coach Kellie (Jolly) Harper won three national titles at Tennessee under the legendary Pat Summitt, including a 39-0 junior season in 1998. The point guard scored 894 points and dished out 452 assists.

The NCAA's all-time leading scorer, assistant Jackie Stiles poured in 3,393 points for Missouri State from 1997-2001. The three-time All-American and 2001 National Player of the Year led the Lady Bears to their second Final Four that season.

Assistant Jennifer Sullivan enjoyed a standout career at Memphis, piling up 800 points, 310 rebounds and 99 steals as a three-year starter for the Tigers.

## MSU Peaks in The Valley

The Lady Bears are 289-139 all-time in MVC play with a 168-45 home record against league foes. Missouri State has won at least a share of 12 regular-season titles and nine conference tournaments since the 1989-90 season. MSU has played in 15 of the 24 Valley tournament championship games and 15 of the 31 title games since the inception of the Gateway Conference Tournament in 1983.

## Missouri State All-Time

Missouri State is in its 48th season of women's collegiate basketball and has an all-time record of 817-571 (.589). MSU began formal competition in 1969 and, with a 24-10 mark in 2016, secured its 31st winning season. The Lady Bears have made 14 NCAA Tournament appearances, highlighted by Final Four trips in 1992 and 2001 to go along with a Sweet 16 appearance in 1993.

The Lady Bears are in their 35th NCAA Division I season and 25th MVC year. MSU was in AIAW competition on the state, regional and national levels through the 1981-82 season, moved to Division I and Gateway Collegiate Athletic Conference play in 1982-83 and started MVC competition in 1992-93 when the Gateway merged with The Valley.

## "Q" Rating

After compiling a 325-108 record in Hammons Student Center over its 32-year stint as home of Missouri State basketball, the Lady Bears posted a 10-4 mark at home in 2015-16 to run their seven-year record to 83-38 in JQH Arena.

The "Q" is the fourth regular home of Missouri State women's basketball in the four-decade history of the program. The Lady Bears utilized both McDonald Arena and the Greenwood Laboratory School gym from 1969 until Hammons Student Center opened in 1976. MSU continued to play some of its home games at McDonald through the 1979-80 season.

## Fandemonium

With the conclusion of their eighth season in JQH Arena, the Lady Bears finished first in the MVC standings in terms of attendance, drawing 47,594 fans in 14 home dates in 2015-16 for a 3,400 average. MSU has now led the MVC in attendance 24 times in the past 27 seasons, and ranked 32nd nationally in 2015-16.

Since the 1990-91 season, Missouri State has ranked in the top 20 nationally in average attendance 19 times, including a string of 10 straight top-10 finishes from 1992 through the 2000-01 season. The Lady Bears led all of Division I women's

## 2016-17 MVC Standings (Dec. 14)

Team	MVC	Overall
Drake	0-0	5-3
Southern Illinois	0-0	5-4
UNI	0-0	5-4
Indiana State	0-0	5-5
Evansville	0-0	4-5
Wichita State	0-0	3-5
<b>Missouri State</b>	<b>0-0</b>	<b>3-6</b>
Illinois State	0-0	3-6
Bradley	0-0	2-6
Loyola	0-0	1-8

### Around the MVC

#### Sunday, Dec. 11

**Missouri State 64 vs. Arkansas 62**  
George Mason 72 at Illinois State 46  
Butler 66 vs. Indiana State 48  
Southern Illinois 69 vs. Memphis 61

#### Friday, Dec. 16

Abilene Christian at Wichita State, 7

#### Saturday, Dec. 17

**North Texas at Missouri State, 2**  
Bradley at Western Michigan, 1  
Incarnate Word at Wichita State, 2

#### Sunday, Dec. 18

Evansville at Louisville, 1  
North Dakota at UNI, 2  
Iowa at Drake, 2  
DePaul at Loyola, 2

#### Monday, Dec. 19

**Middle Tennessee at Missouri State, 6**  
Southern Illinois at UMKC, 3  
Bradley at Valparaiso, 7

#### Tuesday, Dec. 20

Southern Illinois vs. South Dakota, 1  
Illinois State at Western Illinois, 7

#### Wednesday, Dec. 21

Tulsa at Indiana State, 11 a.m.  
Drake vs. Auburn, 3  
Loyola at Lamar, 7  
Alabama A&M at Evansville, 7  
South Dakota State at Wichita State, 7

#### Thursday, Dec. 22

Drake vs. TBA, TBA  
Bradley at UIC, 1  
Kansas State at UNI, 7

#### Friday, Dec. 23

Illinois State at SIUE, 1

### Missouri State in the MVC (Dec. 14)

Category	MSU	MVC Rank
Scoring Offense	60.8	7
Scoring Defense	69.6	6
Scoring Margin	-8.8	8
Free Throw Pct.	.758	2
Field Goal Pct.	.365	9
Field Goal Pct. Defense	.435	7
3 FG Pct.	.342	2
3 FG Pct. Defense	.324	4
Rebounding Offense	36.4	5
Rebounding Defense	34.7	1
Rebounding Margin	+1.8	3
Blocked Shots	2.6	8
Assists	10.8	7
Steals	5.3	10
Turnover Margin	-3.22	9
Assist/Turnover Ratio	0.62	7
Offensive Rebounds	13.8	2
Defensive Rebounds	22.7	8
3 FG Made	5.7	7
Home Attendance	3,114	2



basketball in attendance during the 1992-93 season by averaging 7,421 fans per contest.

MSU ranks in the top 10 among all Division I women's basketball programs in average home attendance over the last two-plus decades, and is joined on that list by the likes of Tennessee and Connecticut. Additionally, the Lady Bears have finished in the top 50 nationally in per game attendance for 29 of the last 30 years.

### Stiles Gets Statue

MSU assistant coach and NCAA Division I all-time leading scorer Jackie Stiles will have a statue constructed in her likeness outside JQH Arena. The unveiling will take place at a date to be announced later this season.

### Lady Bears on the Air

For the 32nd consecutive year, Missouri State Lady Bear basketball will be broadcast by Meyer Communications, which operates Springfield radio station KTXR (101.3 FM). All games will air live on either KTXR or "The Jock" 98.7 FM, and can also be heard over the internet at RadioSpringfield.com.

Tom Ladd will call the action for Missouri State, and former Lady Bear Dr. Lynne Miller will provide color commentary. Ladd will also host "Lady Bears Hotline with Kellie Harper" which will air primarily on "The Jock" 98.7 FM (KWTO) on Mondays at 6 p.m. during the regular season.

MSU begins its third year in a five-year partnership with Nexstar Broadcasting, Inc., to produce seven women's games on KOZL in Springfield. Don West, Tom Ackerman and former Lady Bear Carly Stubblefield will call the games on the Missouri State Television Network this season.

Network affiliates include St. Louis (MyNet 4.3); Kansas City (Time Warner SportsChannel); Columbia/Jefferson City (Mediacom / MC22); Lake of the Ozarks (LakeTV). The network also includes a 30-minute pregame show, Lady Bears Basketball Courtside. The network provides true HD telecasts on cable, satellite and over-the-air options for most affiliates.

### The Valley on ESPN3

The Valley on ESPN3, part of the Missouri Valley Conference's media rights agreement with ESPN, will feature all MSU home games, road conference contests, and the MVC Tournament, with production done by home institutions. Select games are produced for the MVC's exclusive ESPN3 package. In all, 24 of Missouri State's 29 regular-season games, plus the MVC Tournament, can be viewed on ESPN3 and the WatchESPN app.

### Follow the Lady Bears

Follow the Lady Bears all season long on Missouri State's official athletics website, MissouriStateBears.com, and get a behind-the-scenes look at the program on the team's Facebook (LadyBears) and Twitter (@MSULadyBears) pages.

### Missouri State University

Missouri State University is a public, comprehensive university system with a mission in public affairs, whose purpose is to develop educated persons while achieving five goals: democratizing society, incubating new ideas, imagining Missouri's future, making Missouri's future, and modeling ethical and effective behavior.

With an enrollment of 26,000 (fall 2016), MSU is the second-largest institution for higher learning in Missouri, and its identity is distinguished by its statewide mission in public affairs. This mission requires a campus-wide commitment to foster competence and responsibility in the common vocation of citizenship. Missouri State University is a selective admissions, graduate-level, teaching and research institution. MSU competes at the NCAA Division I level and is a member of the Missouri Valley Conference.

Notable Missouri State alums include: Ryan Howard (2009 NLCS MVP, first baseman, Philadelphia Phillies), John Goodman (actor), Kathleen Turner (actress), David Glass (owner, Kansas City Royals), John Q. Hammons (businessman, hotel developer), Bob Holden (43rd governor of Missouri), Bill Mueller (2003 American League batting champ), and Jackie Stiles (Division I career scoring leader).

## Inside the Numbers

(Missouri State vs. North Texas)

Statistics	MSU	NT
Scoring Average	60.8	61.7
Scoring Margin	-8.8	-6.1
Field Goal Percentage	.365	.386
3FG Percentage	.342	.325
Free Throw Percentage	.758	.688
Rebound Margin	+1.8	-7.3
Assists Per Game	10.8	10.8
Assist/Turnover	0.62	0.56
Blocks Per Game	2.6	3.0
Steals Per Game	5.3	8.4

## MSU Record in 2016-17

At home	1-1
On the road	2-4
On a neutral court	0-1
In games decided by 5 points or less	1-1
In Alaska	1-1
In Illinois	0-1
In Kansas	1-0
In Missouri	1-2
In Oklahoma	0-1
In Tennessee	0-1
Winning the opening tip	0-2
Losing the opening tip	3-4
Leading at half	1-0
Trailing at half	2-6
Tied at half	0-0
Leading with 5:00 left in regulation	3-0
Leading with 2:00 left in regulation	2-0
Leading in bench scoring	1-3
Leading in points in paint	1-0
Leading in second-chance points	1-3
Leading in fast-break points	0-1
Leading in points off turnovers	1-1
When starting:	
Buckley, Fruendt, Gitzen, Swartz, Willard	3-6
Scoring below 50	0-2
Scoring 50-59	0-2
Scoring 60-69	2-2
Scoring 70-79	0-0
Scoring 80-89	1-0
Scoring 90+	0-0
Opponent scoring below 50	0-0
Opponent scoring 50-59	1-1
Opponent scoring 60-69	2-1
Opponent scoring 70-79	0-3
Opponent scoring 80-89	0-1
Opponent scoring 90+	0-0
Shooting under 30% from the field	0-3
Shooting 30-39.9% from the field	1-3
Shooting 40-49.9% from the field	1-0
Shooting above 50% from the field	1-0
Shooting under 50% from the FT line	0-1
Shooting 50-59.9% from the FT line	0-0
Shooting 60-69.9% from the FT line	0-1
Shooting 70-79.9% from the FT line	2-2
Shooting above 80% from the FT line	1-2
Attempting more FG than opponent	0-4
Attempting fewer FG than opponent	3-2
Attempting same number of FG as opponent	0-0
Making more 3FG than opponent	2-1
Making fewer 3FG than opponent	0-4
Making same number of 3FG as opponent	1-1
Making more FT than opponent	2-3
Making fewer FT than opponent	1-3
Making same number of FT as opponent	0-0
Recording more rebounds than opponent	2-2
Recording fewer rebounds than opponent	1-3
Recording same number of rebounds as opponent	0-0
Recording more turnovers than opponent	3-4
Recording fewer turnovers than opponent	0-2
Recording same number of turnovers as opponent	0-0
Recording more steals than opponent	0-1
Recording fewer steals than opponent	3-5
Recording same number of steals as opponent	0-0
Recording more assists than opponent	1-2
Recording fewer assists than opponent	0-4
Recording same number of assists as opponent	2-0

## AP Poll - Dec. 12

No.	School	Record	Pts.
1	Connecticut (33)	9-0	825
2	Notre Dame	9-1	764
3	Baylor	10-1	761
4	Maryland	10-0	742
5	Mississippi State	9-0	676
6	South Carolina	7-1	657
7	Florida State	10-1	625
8	Louisville	8-2	574
9	UCLA	7-1	565
10	Stanford	8-1	520
11	Washington	10-1	490
12	Ohio State	8-3	424
13	Miami	8-1	415
14	West Virginia	10-0	406
15	Colorado	9-0	286
16	Texas	3-4	268
17	DePaul	6-3	225
18	Duke	10-1	217
19	Kentucky	7-3	189
20	Oklahoma	7-2	187
21	Syracuse	8-3	162
22	South Florida	7-0	153
23	Arizona State	6-2	137
24	Virginia Tech	10-0	112
25	Oregon	7-1	75

**Receiving Votes:** Oregon State 68, Green Bay 49, Kansas State 44, California 29, Florida 23, Oklahoma State 15, **Northwestern 10**, USC 9, Texas A&M 9, Auburn 7, Gonzaga 4, UNLV 1, Vanderbilt 1, Michigan State 1

## ESPN/USA Today Coaches Poll - Dec. 13

No.	School	Record	Pts.
1	Connecticut (32)	9-0	800
2	Notre Dame	9-1	753
3	Maryland	11-0	725
4	Baylor	10-1	723
5	Mississippi State	9-0	656
6	South Carolina	7-1	644
7	Florida State	10-1	606
8	Louisville	8-2	554
9	UCLA	7-1	553
10	Stanford	8-1	511
11	Washington	10-1	474
12	Miami	8-1	416
13	Ohio State	8-3	409
14	West Virginia	10-0	376
15	Oregon State	6-1	283
16	DePaul	6-3	269
17	Texas	3-4	230
18	Syracuse	8-3	215
19	South Florida	7-0	185
20	Duke	10-1	175
21	Arizona State	6-2	154
22	Oklahoma	7-2	137
23	Kentucky	7-3	124
24	California	9-0	110
25	Virginia Tech	10-0	75

**Receiving Votes:** Colorado 54, Green Bay 51, Oregon 27, Michigan State 26, Oklahoma State 26, Texas A&M 15, Florida 11, **Northwestern 9**, Michigan 7, Kansas State 6, Gonzaga 4, Auburn 3, Georgia Tech 2, Penn State 1, Tennessee 1

**Bold** indicates 2016-17 Missouri State opponent

## Individual MVC Rankings Thru 12/14

Category	Player	Rank	Stat
Scoring	Liza Fruendt	3	15.7
	Aubrey Buckley	24	9.0
Rebounding	Aubrey Buckley	16	4.8
	Rachel Swartz	20	4.3
Assists	Danielle Gitzen	10	2.6
Free Throw %	Liza Fruendt	3	.857
	Aubrey Buckley	10	.744
3-Point %	Liza Fruendt	9	.373
	Lexi Hguhes	13	.346
3s/Game	Liza Fruendt	4	2.1
Blocks	Shameka Ealy	7	0.9
	Rachel Swartz	14	0.7
Off. Rebounds	Aubrey Buckley	5	2.4
	Rachel Swartz	10	1.9
Minutes Played	Liza Fruendt	16	29.2

\*Players must meet MVC statistical minimums to qualify

## 2016-17 Individual NCAA Rankings Thru 12/13

Category	Player	Rank (if top 200)	Stat
FG Attempts	Liza Fruendt	111	128
FT Attempts	Aubrey Buckley	135	43
FT Makes	Aubrey Buckley	132	32
Free Throw %	Liza Fruendt	66	.857
Points/Game	Liza Fruendt	148	15.7
Total Points	Liza Fruendt	173	141
3-Pointers/Game	Liza Fruendt	158	2.11
3-Point%	Liza Fruendt	128	.373

\*Players must meet NCAA statistical minimums to qualify

\*Number of players ranked varies by category

## 2016-17 Team NCAA Rankings Thru 12/13

Category	Rank (of 344)	Stat
Assist/Turnover	274	0.62
Assists/Game	291	10.8
Blocks/Game	244	2.6
Field Goal %	272	.365
Field Goal % Defense	306	.435
Free Throw %	30	.758
Rebound Margin	148	+1.8
Scoring Defense	270	69.6
Scoring Margin	279	-8.8
Scoring Offense	255	60.8
Steals/Game	330	5.3
3-Point Defense	225	.324
3-Pointers/Game	189	5.7
3-Point %	94	.342
Turnover Margin	293	-3.22
Turnovers/Game	212	17.3
Won-Lost %	251	.333

# Season and Career Highs

<b>Season (9 games)</b> .....	<b>#1 Danielle Gitzen</b> .....	<b>Career (43 games)</b>
12, 11/22/16 vs. USC.....	Points.....	14, 3/12/16 vs. Drake
5, 2x, last 12/7/16 at Oral Roberts.....	Rebounds.....	8, 1/10/16 vs. UNI
4, 2x, last 11/22/16 vs. USC.....	Assists.....	6, 2x, last 2/21/16 vs. Evansville
4, 12/2/16 at Missouri.....	Steals.....	4, 12/2/16 at Missouri
NA.....	Blocks.....	NA
5, 11/22/16 vs. USC.....	Field Goals.....	5, 11/22/16 vs. USC
8, 2x, last 11/28/16 vs. Little Rock.....	Field Goal Att.....	8, 2x, last 11/28/16 vs. Little Rock
3, 11/11/16 at Memphis.....	Free Throws.....	9, 3/12/16 vs. Drake
4, 11/11/16 at Memphis.....	Free Throw Att.....	10, 3/12/16 vs. Drake
NA.....	3-Pointers.....	1, 5x, last 3/12/16 vs. Drake
1, 11/11/16 at Memphis.....	3-Point Att.....	3, 3/3/16 vs. Indiana State
31, 11/28/16 vs. Little Rock.....	Minutes.....	31, 11/28/16 vs. Little Rock

<b>Season (9 games)</b> .....	<b>#2 Lexi Hughes</b> .....	<b>Career (107 games)</b>
22, 11/13/16 at Kansas.....	Points.....	24, 1/2/15 vs. Evansville
8, 11/13/16 at Kansas.....	Rebounds.....	8, 11/13/16 at Kansas
5, 12/11/16 vs. Arkansas.....	Assists.....	6, 2x, last 2/20/15 at S. Illinois
4, 11/23/16 at Alaska Anchorage.....	Steals.....	3, 2x, last 3/1/14 at Evansville
NA.....	Blocks.....	1, 3x, last 1/8/16 vs. Drake
9, 11/13/16 at Kansas.....	Field Goals.....	9, 11/13/16 at Kansas
13, 11/13/16 at Kansas.....	Field Goal Att.....	13, 11/13/16 at Kansas
3, 11/23/16 at Alaska Anchorage.....	Free Throws.....	8, 12/6/14 vs. SIUE
4, 12/11/16 vs. Arkansas.....	Free Throw Att.....	8, 12/6/14 vs. SIUE
4, 11/13/16 at Kansas.....	3-Pointers.....	5, 1/2/15 vs. Evansville
4, 11/13/16 at Kansas.....	3-Point Att.....	9, 2x, last 3/20/15 vs. Tulsa
29, 12/11/16 vs. Arkansas.....	Minutes.....	30, 1/3/16 at Indiana State

<b>Season (9 games)</b> .....	<b>#3 Lee Ann Polowy</b> .....	<b>Career (57 games)</b>
9, 11/28/16 vs. Little Rock.....	Points.....	9, 4x, last 11/28/16 vs. Little Rock
4, 11/23/16 at Alaska Anchorage.....	Rebounds.....	4, 2x, last 11/23/16 at Alaska Anchorage
4, 11/28/16 vs. Little Rock.....	Assists.....	4, 11/28/16 vs. Little Rock
2, 11/13/16 at Kansas.....	Steals.....	2, 11/13/16 at Kansas
NA.....	Blocks.....	NA
3, 11/28/16 vs. Little Rock.....	Field Goals.....	3, 4x, last 11/28/16 vs. Little Rock
6, 11/11/16 at Memphis.....	Field Goal Att.....	6, 6x, last 11/11/16 at Memphis
2, 11/11/16 at Memphis.....	Free Throws.....	2, 11/11/16 at Memphis
2, 11/11/16 at Memphis.....	Free Throw Att.....	2, 4x, last 11/11/16 at Memphis
3, 11/28/16 vs. Little Rock.....	3-Pointers.....	3, 4x, last 11/28/16 vs. Little Rock
5, 11/11/16 at Memphis.....	3-Point Att.....	6, 3/1/15 vs. Drake
18, 11/28/16 vs. Little Rock.....	Minutes.....	25, 11/28/14 at Colorado

<b>Season (9 games)</b> .....	<b>#5 Liza Fruendt</b> .....	<b>Career (68 games)</b>
23, 12/11/16 vs. Arkansas.....	Points.....	25, 11/19/15 at Ole Miss
7, 11/13/16 at Kansas.....	Rebounds.....	10, 3/3/16 vs. Indiana State
4, 12/7/16 at Oral Roberts.....	Assists.....	4, 2x, last 12/7/16 at Oral Roberts
4, 11/13/16 at Kansas.....	Steals.....	4, 11/13/16 at Kansas
1, 12/11/16 vs. Arkansas.....	Blocks.....	1, 6x, last 12/11/16 vs. Arkansas
9, 12/11/16 vs. Arkansas.....	Field Goals.....	9, 12/11/16 vs. Arkansas
23, 12/11/16 vs. Arkansas.....	Field Goal Att.....	23, 12/11/16 vs. Arkansas
9, 11/22/16 vs. USC.....	Free Throws.....	9, 11/22/16 vs. USC
10, 11/22/16 vs. USC.....	Free Throw Att.....	10, 11/22/16 vs. USC
5, 12/11/16 vs. Arkansas.....	3-Pointers.....	5, 3x, last 12/11/16 vs. Arkansas
9, 12/11/16 vs. Arkansas.....	3-Point Att.....	10, 2/12/16 vs. Loyola
39, 12/11/16 vs. Arkansas.....	Minutes.....	39, 12/11/16 vs. Arkansas

<b>Season (5 games)</b> .....	<b>#11 Brice Calip</b> .....	<b>Career (5 games)</b>
14, 11/13/16 at Kansas.....	Points.....	14, 11/13/16 at Kansas
4, 11/13/16 at Kansas.....	Rebounds.....	4, 11/13/16 at Kansas
3, 2x, last 11/16/16 at Northwestern.....	Assists.....	3, 2x, last 11/16/16 at Northwestern
1, 3x, last 11/22/16 vs. USC.....	Steals.....	1, 3x, last 1/22/16 vs. USC
NA.....	Blocks.....	NA
6, 11/13/16 at Kansas.....	Field Goals.....	6, 11/13/16 at Kansas
11, 11/13/16 at Kansas.....	Field Goal Att.....	11, 11/13/16 at Kansas
2, 3x, last 11/23/16 at Alaska Anchorage.....	Free Throws.....	2, 3x, last 11/23/16 at Alaska Anchorage
3, 11/11/16 at Memphis.....	Free Throw Att.....	3, 11/11/16 at Memphis
NA.....	3-Pointers.....	NA
1, 11/16/16 at Northwestern.....	3-Point Att.....	1, 11/16/16 at Northwestern
26, 11/13/16 at Kansas.....	Minutes.....	26, 11/13/16 at Kansas

<b>Season (9 games)</b> .....	<b>#13 Audrey Holt</b> .....	<b>Career (66 games)</b>
7, 11/13/16 at Kansas.....	Points.....	8, 3x, last 3/5/16 vs. Illinois State
5, 2x, last 11/23/16 at Alaska Anchorage.....	Rebounds.....	11, 1/10/16 vs. UNI
3, 11/23/16 at Alaska Anchorage.....	Assists.....	4, 1/4/15 vs. Indiana State
2, 11/11/16 at Memphis.....	Steals.....	3, 3/13/15 vs. Indiana State
2, 11/13/16 at Kansas.....	Blocks.....	2, 8x, last 11/13/16 at Kansas
2, 4x, last 11/23/16 at Alaska Anchorage.....	Field Goals.....	4, 2/19/16 vs. Southern Illinois
5, 2x, last 11/23/16 at Alaska Anchorage.....	Field Goal Att.....	9, 2/19/16 vs. Southern Illinois
2, 11/13/16 at Kansas.....	Free Throws.....	5, 2/15/15 vs. Loyola
2, 3x, last 12/7/16 at Oral Roberts.....	Free Throw Att.....	6, 2/15/15 vs. Loyola
1, 11/13/16 at Kansas.....	3-Pointers.....	1, 9x, last 11/13/16 at Kansas
1, 4x, last 12/2/16 at Missouri.....	3-Point Att.....	3, 2/15/15 vs. Loyola
29, 11/13/16 at Kansas.....	Minutes.....	36, 1/10/16 vs. UNI

<b>Season (9 games)</b> .....	<b>#21 Aubrey Buckley</b> .....	<b>Career (53 games)</b>
14, 12/11/16 vs. Arkansas.....	Points.....	14, 12/11/16 vs. Arkansas
8, 11/16/16 at Northwestern.....	Rebounds.....	9, 3/5/15 at Indiana State
4, 11/23/16 at Alaska Anchorage.....	Assists.....	4, 11/23/16 at Alaska Anchorage
1, 5x, last 12/11/16 vs. Arkansas.....	Steals.....	3, 2x, last 12/2/15 at Arkansas
NA.....	Blocks.....	1, 7x, last 12/20/15 at Little Rock
4, 3x, last 12/7/16 at Oral Roberts.....	Field Goals.....	5, 12/20/15 at Little Rock
11, 11/28/16 vs. Little Rock.....	Field Goal Att.....	11, 3x, last 11/28/16 vs. Little Rock
10, 11/22/16 vs. USC.....	Free Throws.....	10, 11/22/16 vs. USC
14, 11/22/16 vs. USC.....	Free Throw Att.....	14, 11/22/16 vs. USC
1, 3x, last 12/11/16 vs. Arkansas.....	3-Pointers.....	1, 6x, last 12/11/16 vs. Arkansas
2, 3x, last 11/28/16 vs. Little Rock.....	3-Point Att.....	2, 5x, last 11/28/16 vs. Little Rock
32, 12/11/16 vs. Arkansas.....	Minutes.....	32, 12/11/16 vs. Arkansas

<b>Season (9 games)</b> .....	<b>#22 Alexa Willard</b> .....	<b>Career (9 games)</b>
13, 11/11/16 at Memphis.....	Points.....	13, 11/11/16 at Memphis
7, 12/11/16 vs. Arkansas.....	Rebounds.....	7, 12/11/16 vs. Arkansas
2, 2x, last 11/22/16 vs. USC.....	Assists.....	2, 2x, last 11/22/16 vs. USC
2, 11/16/16 at Northwestern.....	Steals.....	2, 11/16/16 at Northwestern
2, 12/11/16 vs. Arkansas.....	Blocks.....	2, 12/11/16 vs. Arkansas
6, 11/11/16 at Memphis.....	Field Goals.....	6, 11/11/16 at Memphis
10, 11/11/16 at Memphis.....	Field Goal Att.....	10, 11/11/16 at Memphis
3, 12/7/16 at Oral Roberts.....	Free Throws.....	3, 12/7/16 at Oral Roberts
4, 12/7/16 at Oral Roberts.....	Free Throw Att.....	4, 12/7/16 at Oral Roberts
1, 2x, last 11/23/16 at Alaska Anchorage.....	3-Pointers.....	1, 2x, last 11/23/16 at Alaska Anchorage
3, 11/11/16 at Memphis.....	3-Point Att.....	3, 11/11/16 at Memphis
30, 12/11/16 vs. Arkansas.....	Minutes.....	30, 12/11/16 vs. Arkansas

<b>Season (9 games)</b> .....	<b>#30 Shameka Ealy</b> .....	<b>Career (9 games)</b>
10, 11/16/16 at Northwestern.....	Points.....	10, 11/16/16 at Northwestern
8, 12/7/16 at Oral Roberts.....	Rebounds.....	8, 12/7/16 at Oral Roberts
1, 4x, last 12/7/16 at Oral Roberts.....	Assists.....	1, 4x, last 12/7/16 at Oral Roberts
1, 11/23/16 at Alaska Anchorage.....	Steals.....	1, 11/23/16 at Alaska Anchorage
2, 2x, last 12/7/16 at Oral Roberts.....	Blocks.....	2, 2x, last 12/7/16 at Oral Roberts
4, 11/16/16 at Northwestern.....	Field Goals.....	4, 11/16/16 at Northwestern
12, 12/2/16 at Missouri.....	Field Goal Att.....	12, 12/2/16 at Missouri
NA.....	Free Throws.....	NA
NA.....	Free Throw Att.....	NA
2, 2x, last 12/2/16 at Missouri.....	3-Pointers.....	2, 2x, last 12/2/16 at Missouri
5, 11/16/16 at Northwestern.....	3-Point Att.....	5, 11/16/16 at Northwestern
20, 11/16/16 at Northwestern.....	Minutes.....	20, 11/16/16 at Northwestern

<b>Season (9 games)</b> .....	<b>#34 Rachel Swartz</b> .....	<b>Career (102 games)</b>
10, 2x, last 12/7/16 at Oral Roberts.....	Points.....	10, 3x, last 12/7/16 at Oral Roberts
10, 12/11/16 vs. Arkansas.....	Rebounds.....	10, 12/11/16 vs. Arkansas
1, 2x, last 12/7/16 at Oral Roberts.....	Assists.....	2, 2x, last 11/28/14 at Colorado
1, 11/28/16 vs. Little Rock.....	Steals.....	2, 3x, last 3/5/16 vs. Illinois State
3, 12/11/16 vs. Arkansas.....	Blocks.....	3, 12/11/16 vs. Arkansas
5, 12/7/16 at Oral Roberts.....	Field Goals.....	5, 12/7/16 at Oral Roberts
9, 12/7/16 at Oral Roberts.....	Field Goal Att.....	9, 12/7/16 at Oral Roberts
4, 11/16/16 at Northwestern.....	Free Throws.....	4, 3x, last 11/16/16 at Northwestern
4, 2x, last 12/2/16 at Missouri.....	Free Throw Att.....	5, 2x, last 12/10/14 vs. Arkansas
1, 11/22/16 vs. USC.....	3-Pointers.....	1, 3x, last 11/22/16 vs. USC
1, 11/22/16 vs. USC.....	3-Point Att.....	2, 11/17/15 vs. MidAmerica Naz.
26, 11/22/16 vs. USC.....	Minutes.....	26, 11/22/16 vs. USC

<b>Season (2 games)</b> .....	<b>#40 Onye Osemenam</b> .....	<b>Career (92 games)</b>
NA.....	Points.....	6, 2x, last 11/27/15 vs. #13 Stanford
1, 11/13/16 at Kansas.....	Rebounds.....	8, 11/28/14 at Colorado
1, 11/13/16 at Kansas.....	Assists.....	1, 11x, last 11/13/16 at Kansas
NA.....	Steals.....	2, 2x, last 3/19/16 at #18 Texas A&M
NA.....	Blocks.....	3, 2x, last 1/8/16 vs. Drake
NA.....	Field Goals.....	3, 2x, last 11/27/15 vs. #13 Stanford
NA.....	Field Goal Att.....	5, 11/28/14 at Colorado
NA.....	Free Throws.....	2, 4x, last 3/5/16 vs. Illinois State
NA.....	Free Throw Att.....	3, 11/29/14 vs. TCU
NA.....	3-Pointers.....	NA
NA.....	3-Point Att.....	NA
15, 11/13/16 at Kansas.....	Minutes.....	23, 12/17/15 at Middle Tennessee

<b>Season (0 games)</b> .....	<b>#50 Emily Gartner</b> .....	<b>Career (0 games)</b>
NA.....	Points.....	NA
NA.....	Rebounds.....	NA
NA.....	Assists.....	NA
NA.....	Steals.....	NA
NA.....	Blocks.....	NA
NA.....	Field Goals.....	NA
NA.....	Field Goal Att.....	NA
NA.....	Free Throws.....	NA
NA.....	Free Throw Att.....	NA
NA.....	3-Pointers.....	NA
NA.....	3-Point Att.....	NA
NA.....	Minutes.....	NA

## Career Overall Statistics For Players Active Prior to 2016-17

### Buckley,Aubrey

Season	gp-gs	min/avg	Total		3-Point		F-Throws		Rebounds				Scoring							
			fg-fga	pct	fg-fga	pct	ft-fita	pct	off	def	tot	avg	pf	fo	ast	to	blk	stl	pts	avg
2014-15	33-30	712/21.6	38-129	.295	2-16	.125	68-100	.680	45	51	96	2.9	58	0	16	29	5	22	146	4.4
2015-16	11-11	272/24.7	19-58	.328	1-8	.125	23-33	.697	16	27	43	3.9	19	0	7	15	2	7	62	5.6
2016-17	9-9	230/25.6	23-62	.371	3-10	.300	32-43	.744	22	21	43	4.8	22	0	7	17	1	5	81	9.0
TOTAL	53-50	1214/22.9	80-249	.321	6-34	.176	123-176	.699	83	99	182	3.4	99	0	30	61	8	34	289	5.5

### Fruendt,Liza

Season	gp-gs	min/avg	Total		3-Point		F-Throws		Rebounds				Scoring							
			fg-fga	pct	fg-fga	pct	ft-fita	pct	off	def	tot	avg	pf	fo	ast	to	blk	stl	pts	avg
2014-15	25-5	479/19.2	89-230	.387	41-107	.383	40-49	.816	16	50	66	2.6	33	0	28	47	2	17	259	10.4
2015-16	34-6	696/20.5	137-355	.386	59-185	.319	41-51	.804	14	81	95	2.8	49	1	24	42	3	21	374	11.0
2016-17	9-9	263/29.2	46-128	.359	19-51	.373	30-35	.857	4	25	29	3.2	14	0	14	17	1	11	141	15.7
TOTAL	68-20	1438/21.1	272-713	.381	119-343	.347	111-135	.822	34	156	190	2.8	96	1	66	106	6	49	774	11.4

### Gitzen,Danielle

Season	gp-gs	min/avg	Total		3-Point		F-Throws		Rebounds				Scoring							
			fg-fga	pct	fg-fga	pct	ft-fita	pct	off	def	tot	avg	pf	fo	ast	to	blk	stl	pts	avg
2015-16	34-19	537/15.8	35-108	.324	5-27	.185	33-45	.733	27	52	79	2.3	46	0	48	47	0	16	108	3.2
2016-17	9-9	203/22.6	15-44	.341	2-6	.333	8-12	.667	7	20	27	3.0	17	0	23	24	0	9	40	4.4
TOTAL	43-28	740/17.2	50-152	.329	7-33	.212	41-57	.719	34	72	106	2.5	63	0	71	71	0	25	148	3.4

### Holt,Audrey

Season	gp-gs	min/avg	Total		3-Point		F-Throws		Rebounds				Scoring							
			fg-fga	pct	fg-fga	pct	ft-fita	pct	off	def	tot	avg	pf	fo	ast	to	blk	stl	pts	avg
2014-15	33-0	562/17.0	35-92	.380	6-17	.353	26-39	.667	50	58	108	3.3	66	0	25	36	16	21	102	3.1
2015-16	25-19	608/24.3	33-100	.330	2-19	.105	17-25	.680	57	56	113	4.5	44	1	14	42	10	21	85	3.4
2016-17	9-0	167/18.6	11-30	.367	1-4	.250	5-8	.625	12	12	24	2.7	26	2	7	12	4	3	28	3.1
TOTAL	67-19	1337/20.0	79-222	.356	9-40	.225	48-72	.667	119	126	245	3.7	136	3	46	90	30	45	215	3.2

### Hughes,Lexi

Season	gp-gs	min/avg	Total		3-Point		F-Throws		Rebounds				Scoring							
			fg-fga	pct	fg-fga	pct	ft-fita	pct	off	def	tot	avg	pf	fo	ast	to	blk	stl	pts	avg
2013-14	31-0	540/17.4	46-104	.442	34-73	.466	12-14	.857	6	40	46	1.5	23	0	43	51	1	23	138	4.5
2014-15	33-1	656/19.9	78-226	.345	46-148	.311	30-37	.811	12	58	70	2.1	38	0	65	56	1	13	232	7.0
2015-16	34-3	549/16.1	77-212	.363	40-107	.374	19-26	.731	6	58	64	1.9	30	0	44	44	1	17	213	6.3
2016-17	9-0	185/20.6	26-65	.400	9-26	.346	9-14	.643	6	20	26	2.9	10	0	14	17	0	5	70	7.8
TOTAL	107-4	1930/18.0	227-607	.374	129-354	.364	70-91	.769	30	176	206	1.9	101	0	166	168	3	58	653	6.1

### Osemenam,Onye

Season	gp-gs	min/avg	Total		3-Point		F-Throws		Rebounds				Scoring							
			fg-fga	pct	fg-fga	pct	ft-fita	pct	off	def	tot	avg	pf	fo	ast	to	blk	stl	pts	avg
2013-14	28-0	211/7.5	5-13	.385	0-0	.000	4-10	.400	19	17	36	1.3	47	1	1	12	13	3	14	0.5
2014-15	28-0	211/7.5	9-22	.409	0-1	.000	5-15	.333	23	26	49	1.8	44	0	2	13	12	6	23	0.8
2015-16	34-1	444/13.1	16-48	.333	0-0	.000	10-24	.417	27	43	70	2.1	66	1	8	21	22	12	42	1.2
2016-17	2-0	21/10.5	0-0	.000	0-0	.000	0-0	.000	0	1	1	0.5	4	0	1	2	0	0	0	0.0
TOTAL	92-1	887/9.6	30-83	.361	0-1	.000	19-49	.388	69	87	156	1.7	161	2	12	48	47	21	79	0.9

### Polowy,Lee Ann

Season	gp-gs	min/avg	Total		3-Point		F-Throws		Rebounds				Scoring							
			fg-fga	pct	fg-fga	pct	ft-fita	pct	off	def	tot	avg	pf	fo	ast	to	blk	stl	pts	avg
2014-15	23-0	194/8.4	14-56	.250	14-45	.311	1-4	.250	4	17	21	0.9	18	1	4	13	0	1	43	1.9
2015-16	25-0	144/5.8	15-43	.349	13-38	.342	1-2	.500	4	6	10	0.4	17	0	5	9	0	2	44	1.8
2016-17	9-0	134/14.9	9-32	.281	8-24	.333	4-6	.667	4	14	18	2.0	9	0	8	5	0	5	30	3.3
TOTAL	57-0	472/8.3	38-131	.290	35-107	.327	6-12	.500	12	37	49	0.9	44	1	17	27	0	8	117	2.1

### Swartz,Rachel

Season	gp-gs	min/avg	Total		3-Point		F-Throws		Rebounds				Scoring							
			fg-fga	pct	fg-fga	pct	ft-fita	pct	off	def	tot	avg	pf	fo	ast	to	blk	stl	pts	avg
2013-14	28-5	257/9.2	10-24	.417	0-0	.000	10-22	.455	23	31	54	1.9	49	1	4	21	1	11	30	1.1
2014-15	32-6	329/10.3	31-88	.352	1-3	.333	17-33	.515	22	59	81	2.5	58	0	6	25	4	5	80	2.5
2015-16	33-0	284/8.6	19-46	.413	1-4	.250	17-24	.708	31	42	73	2.2	42	0	3	16	6	8	56	1.7
2016-17	9-9	189/21.0	18-42	.429	1-2	.500	8-10	.800	17	22	39	4.3	22	0	2	14	6	1	45	5.0
TOTAL	102-20	1059/10.4	78-200	.390	3-9	.333	52-89	.584	93	154	247	2.4	171	1	15	76	17	25	211	2.1

## 2016-17 Game Highs and Lows

<b>Missouri State Highs</b>	<b>Individual</b>	<b>Team</b>
Points	23, Liza Fruendt vs. Arkansas (Dec. 11)	87 at Kansas (Nov. 13)
Field Goals Made	9, Lexi Hughes at Kansas (Nov. 13)	32 at Kansas (Nov. 13)
	9, Liza Fruendt vs. Arkansas (Dec. 11)	
Field Goal Attempts	23, Liza Fruendt vs. Arkansas (Dec. 11)	60 at Kansas (Nov. 13)
Field Goal Percentage	.692 (9-13), Lexi Hughes at Kansas (Nov. 13)	.533 (32-60) at Kansas (Nov. 13)
Three-Point Field Goals Made	5, Liza Fruendt vs. Arkansas (Dec. 11)	8 at Kansas (Nov. 13)
		8 vs. Arkansas (Dec. 11)
Three-Point Field Goal Attempts	9, Liza Fruendt vs. Arkansas (Dec. 11)	22 at Northwestern (Nov. 16)
Three-Point Field Goal Percentage	1.000 (4-4), Lexi Hughes at Kansas (Nov. 13)	.533 (8-15) at Kansas (Nov. 13)
Free Throws Made	10, Aubrey Buckley vs. USC (Nov. 22)	25 vs. USC (Nov. 22)
Free Throw Attempts	14, Aubrey Buckley vs. USC (Nov. 22)	34 vs. USC (Nov. 22)
Free Throw Percentage	.900 (9-10), Liza Fruendt vs. USC (Nov. 22)	.882 (15-17) at Alaska Anchorage (Nov. 23)
Rebounds	10, Rachel Swartz vs. Arkansas (Dec. 11)	46 at Northwestern (Nov. 16)
Assists	5, Lexi Hughes vs. Arkansas (Dec. 11)	15 at Alaska Anchorage (Nov. 23)
Turnovers	6, Aubrey Buckley at Alaska Anchorage (Nov. 23)	22 at Kansas (Nov. 13)
		22 at Alaska Anchorage (Nov. 23)
Blocked Shots	3, Rachel Swartz vs. Arkansas (Dec. 11)	7 vs. Arkansas (Dec. 11)
Steals	4, Liza Fruendt at Kansas (Nov. 13)	9 at Alaska Anchorage (Nov. 23)
	4, Lexi Hughes at Alaska Anchorage (Nov. 23)	
	4, Danielle Gitzen at Missouri (Dec. 2)	
Fouls	5, Audrey Holt vs. USC (Nov. 22)	23 at Missouri (Dec. 2)
	5, Shameka Ealy at Missouri (Dec. 2)	
	5, Audrey Holt vs. Arkansas (Dec. 11)	
<b>Opponent Highs</b>	<b>Individual</b>	<b>Team</b>
Points	22, Sophie Cunningham, Missouri (Dec. 2)	89, USC (Nov. 22)
Field Goals Made	9, Sophie Cunningham, Missouri (Dec. 2)	34, USC (Nov. 22)
Field Goal Attempts	21, McKenzie Calvert, Kansas (Nov. 13)	70, Kansas (Nov. 13)
	21, Jessica Washington, Kansas (Nov. 13)	
Field Goal Percentage	.875 (7-8), Taylor Williams, Memphis (Nov. 11)	.574 (27-47), Memphis (Nov. 11)
Three-Point Field Goals Made	4, Sierra Michaelis, Missouri (Dec. 2)	8, Missouri (Dec. 2)
Three-Point Field Goal Attempts	10, McKenzie Calvert, Kansas (Nov. 13)	24, Kansas (Nov. 13)
	10, Sierra Michaelis, Missouri (Dec. 2)	24, Missouri (Dec. 2)
Three-Point Field Goal Percentage	1.000 (3-3), Taylor Williams, Memphis (Nov. 11)	.556 (5-9), Memphis (Nov. 11)
Free Throws Made	8, Cierra Porter, Missouri (Dec. 2)	19, Missouri (Dec. 2)
		19, Oral Roberts (Dec. 7)
Free Throw Attempts	8, Cierra Porter, Missouri (Dec. 2)	24, Arkansas (Dec. 11)
Free Throw Percentage	1.000 (8-8), Cierra Porter, Missouri (Dec. 2)	.905 (19-21), Oral Roberts (Dec. 7)
	1.000 (6-6), Jessica Jackson, Arkansas (Dec. 11)	
Rebounds	11, Kristen Simon, USC (Nov. 22)	42, Missouri (Dec. 2)
Assists	11, Minyon Moore, USC (Nov. 22)	25, USC (Nov. 22)
Turnovers	5, by three players on three occasions	21, Alaska Anchorage (Nov. 23)
Blocked Shots	4, Lauren Douglas, Northwestern (Nov. 16)	8, Northwestern (Nov. 16)
Steals	6, Ashley Deary, Northwestern (Nov. 16)	14, Alaska Anchorage (Nov. 23)
Fouls	5, Alysha Devine, Alaska Anchorage (Nov. 23)	30, USC (Nov. 22)
	5, Kaitlyn Pratt, Little Rock (Nov. 28)	
<b>Team Lows</b>	<b>Missouri State</b>	<b>Opponents</b>
Points	47 vs. Little Rock (Nov. 28)	58, Little Rock (Nov. 28)
Field Goals Made	16 at Missouri (Dec. 2)	21, Alaska Anchorage (Nov. 23)
Field Goal Attempts	56 vs. Arkansas (Dec. 11)	47, Memphis (Nov. 11)
Field Goal Percentage	.271 (16-59) at Missouri (Dec. 2)	.08 (20-65), Arkansas (Dec. 11)
Three-Point Field Goals Made	3 at Memphis (Nov. 11)	3, Little Rock (Nov. 28)
Three-Point Field Goal Attempts	11 at Oral Roberts (Dec. 7)	9, Memphis (Nov. 11)
Three-Point Field Goal Percentage	.158 (3-19) at Memphis (Nov. 11)	.250 (6-24), Kansas (Nov. 13)
Free Throws Made	1 vs. Little Rock (Nov. 28)	8, Kansas (Nov. 13)
Free Throw Attempts	4 vs. Little Rock (Nov. 28)	12, Alaska Anchorage (Nov. 23)
Free Throw Percentage	.250 (1-4) vs. Little Rock (Nov. 28)	.571 (8-14), Kansas (Nov. 13)
Rebounds	25 at Memphis (Nov. 11)	22, Alaska Anchorage (Nov. 23)
Assists	6 at Missouri (Dec. 2)	6, Arkansas (Dec. 11)
Turnovers	12 at Memphis (Nov. 11)	10, Arkansas (Dec. 11)
Blocked Shots	0 at Memphis (Nov. 11)	0, Alaska Anchorage (Nov. 23)
	0 at Missouri (Dec. 2)	
Steals	1 vs. Arkansas (Dec. 11)	4, Memphis (Nov. 11)
Fouls	13 at Northwestern (Nov. 16)	14, Little Rock (Nov. 28)

\*Individual minimum for field goal percentage is five made; minimum for three-point percentage is three made; minimum for free throw percentage is six made.

## The Last Time it Happened

### The Last Time Missouri State...

Scored 100 Points . . . . . 104 vs. Morgan State, 12/18/11  
Failed to make a 3-point basket . . . . . 0-14 vs. Creighton, 3/10/12  
Recorded 20 Assists . . . . . 20 vs. Evansville, 1/22/16  
Recorded 50-59 Rebounds . . . . . 54 vs. Illinois State, 3/5/16  
Recorded 60-64 Rebounds . . . . . 60 vs. Drake, 1/19/13  
Recorded 65+ Rebounds . . . . . 68 vs. Northern Kentucky, 12/1/12  
20+ Rebound Margin . . . . . +28 (54-26) vs. Illinois State, 3/5/16  
Committed 10 or Fewer Turnovers . . . . . 9 vs. SIU, 1/24/16  
Committed 20-29 Turnovers . . . . . 22 at Alaska Anchorage, 11/23/16  
Committed 30+ Turnovers . . . . . 34 vs. Arkansas State, 11/23/08  
Made 30+ Free Throws . . . . . 30 at North Texas, 12/29/13  
Blocked 10+ Shots . . . . . 10 vs. Drake, 1/8/16  
Had 15+ Steals . . . . . 16 vs. Wichita State, 2/27/16  
Shot 100% from the Free Throw Line (Min. 10 FTA) . . . . .  
. . . . . 14-14 vs. Wichita State, 3/15/15  
Had Two Players Score 20 Points . . . . . Tyonna Snow (41),  
. . . . . Kenzie Williams (20), vs. Loyola, 2/12/16  
Had Two Players Record a Double-Double . . . . .  
. . . . . Hillary Chvatal (11 points, 10 rebounds) and  
. . . . . Tyonna Snow (25 points, 11 rebounds) vs. Maine, 11/28/15  
Had at Least Five Players Score in Double Figures . . . . .  
. . . . . Hillary Chvatal (16), Liza Fruendt (16)  
. . . . . Lexi Hughes (14), Tyonna Snow (12) and  
. . . . . Kenzie Williams (12) vs. Loyola (2/15/15)

### The Last Time an Opposing Team...

Scored 100 Points . . . . . 107, Indiana State, 1/28/89 (4OT) (845 games)  
. . . . . In regulation - 102, Vanderbilt, 12/29/85 (954 games)  
Failed to make a 3-point basket . . . . . 0-7, Southern Illinois, 3/4/99  
Recorded 20+ Assists . . . . . 25, USC, 11/22/16  
Recorded 50-59 Rebounds . . . . . 52, Oklahoma State, 11/23/15  
Recorded 60+ Rebounds . . . . . 60, Iowa, 12/19/12  
20+ Rebound Margin . . . . . +22 (52-30), Oklahoma State, 11/23/15  
Committed 20-24 Turnovers . . . . . 21, Alaska Anchorage, 11/23/16  
Committed 25-29 Turnovers . . . . . 27, Loyola, 2/12/16  
Committed 30+ Turnovers . . . . . 31, Bradley, 1/18/15  
Blocked 10+ Shots . . . . . 13, Wichita State, 3/9/13  
Had 15+ Steals . . . . . 15, Ole Miss, 11/19/15  
Had at Least Five Players Score in Double Figures . . . . .  
. . . . . Aundrea Gamble (22), Hanna Qedan (15)  
. . . . . Khadija Brown-Haywood (12), Jasmine Hunt (12)  
. . . . . Brittney Gill (12), Arkansas State, 12/19/14

### The Last Time a Missouri State Player...

Scored 30-39 Points . . . . . 32, Kenzie Williams vs. Lamar, 12/15/13  
Scored 40-49 Points . . . . . 41, Tyonna Snow vs. Loyola, 2/12/16  
Scored 50+ Points . . . . . 56, Jackie Stiles vs. Evansville, 3/10/00  
Shot 100% from the Field (Min. 6 FGA) . . . . .  
. . . . . 6-6, K.C. Cowgill at Wichita State, 1/30/05  
Shot 100% from the Free Throw Line (Min. 10 FTA) . . . . .  
. . . . . 11-11, Kenzie Williams at Illinois State, 2/22/15  
Made Five 3-pointers . . . . . 5, Liza Fruendt vs. Loyola, 2/12/16  
Made 10-14 Free Throws . . . . . 10, Aubrey Buckley vs. USC, 11/22/16  
Made 15+ Free Throws . . . . .  
. . . . . 21, Tyonna Snow vs. Loyola, 2/12/16  
Grabbed 15+ Rebounds . . . . .  
. . . . . 15, Tyonna Snow vs. UNI, 3/13/16  
Recorded 8+ Assists . . . . . 8, Riley Rose at Ole Miss, 11/19/15  
Recorded 10+ Assists . . . . .  
. . . . . 10, Casey Garrison vs. Illinois State, 1/29/13  
Blocked 5+ Shots . . . . . 5, Tyonna Snow vs. Bradley, 2/14/16  
Had 5+ Steals . . . . . 6, Tyonna Snow at Southern Illinois, 2/19/16  
Had 7+ Steals . . . . . 7, Tyonna Snow vs. Wichita State, 2/27/16  
Had 10+ Steals . . . . . 10, Kari Koch vs. UNI, 1/23/03  
Had a Double-Double . . . . . Tyonna Snow (17 points, 15 rebounds)  
. . . . . vs. UNI, 3/13/16  
Had a Triple-Double . . . . . Casey Garrison  
. . . . . 11 points, 11 rebounds, 13 assists vs. Tulsa, 12/8/09  
Scored at Least 10 points in 10+ Consecutive Games . . . . .  
. . . . . 22, Tyonna Snow, 1/1/16-3/19/16

### The Last Time an Opposing Player...

Scored 30-39 Points . . . . . 30, Sigi Koizar, Maine, 11/28/15  
Scored 40-49 Points . . . . . 43, Lizzy Wendell, Drake, 1/30/15  
Scored 50+ Points . . . . . 54, Wanda Ford, Drake, 2/22/86  
Shot 100% from the Field (Min. 6 FGA) . . . . .  
. . . . . 8-8, Cierra Warren, #9 Louisville, 11/13/12  
Made Five 3-Pointers . . . . . 5, Sigi Koizar, Maine, 11/28/15  
Grabbed 15-19 Rebounds . . . . .  
. . . . . 16, Brianna Wright, Memphis, 11/14/14  
Grabbed 20+ Rebounds . . . . .  
. . . . . 27, Anriel Howard, #18 Texas A&M, 3/19/16  
Recorded 10+ Assists . . . . .  
. . . . . 10, Caitlin Ingle, Drake, 2/7/16  
Blocked 5+ Shots . . . . . 8, Vicky McIntyre, Oral Roberts, 11/24/14  
Had 10+ Steals . . . . . 11, April Banks, Wichita State, 1/4/04  
Had a Double-Double . . . . . Kristen Simon (18 points, 11 rebounds)  
. . . . . and Minyon Moore (15 points, 11 assists), USC, 11/22/16  
Had a Triple-Double . . . . . Caitlin Ingle  
. . . . . (14 points, 11 rebounds, 10 assists) Drake, 1/30/15

## 2016-17 Game-by-Game Individual Totals

Opponent	Score	Buckley P-R-A	Calip P-R-A	Ealy P-R-A	Fruendt P-R-A	Gitzen P-R-A	Holt P-R-A	Hughes P-R-A	Osemenam P-R-A	Polowy P-R-A	Swartz P-R-A	Willard P-R-A
Truman State <sup>(EX)</sup>	72-62	10-4-1	5-4-4	7-8-0	19-2-0	4-6-0	2-1-2	9-2-4	2-5-0	6-2-1	5-8-1	3-2-1
Northeastern State <sup>(EX)</sup>	87-46	8-2-0	6-5-3	10-1-1	12-7-1	4-5-5	2-1-0	3-6-5	2-5-0	20-0-1	4-11-2	16-5-4
Memphis	60-69	5-2-1	6-1-1	0-0-0	17-3-0	5-3-4	4-4-1	1-0-1	0-0-0	5-1-0	4-1-0	13-6-2
Kansas	87-64	10-2-0	14-4-3	2-3-0	18-7-2	5-1-1	7-5-1	22-8-1	0-1-1	3-2-1	0-6-0	6-2-0
Northwestern	52-75	9-8-1	3-2-3	10-5-0	9-1-1	2-5-2	0-2-0	5-1-1	INJ	0-3-3	10-9-0	4-1-1
USC	67-89	12-7-0	3-3-1	3-6-0	21-1-2	12-3-4	4-0-1	2-1-1	INJ	1-2-0	5-1-0	4-3-2
Alaska Anchorage	65-58	12-4-4	4-2-1	2-1-1	16-3-2	4-1-1	5-5-3	10-2-1	INJ	3-4-0	2-2-1	7-0-1
Little Rock	47-58	9-4-0	INJ	0-1-1	3-2-0	8-3-2	3-4-0	9-4-1	INJ	9-2-4	4-2-0	2-5-1
Missouri	49-73	0-5-0	INJ	8-5-1	22-4-1	4-3-3	0-1-0	3-4-0	INJ	4-2-0	4-3-0	4-1-1
Oral Roberts	56-78	10-3-0	INJ	5-8-1	12-5-4	0-5-3	3-2-0	6-3-3	INJ	5-2-0	10-5-1	5-3-0
Arkansas	64-62	14-8-1	INJ	2-1-0	23-3-2	0-3-3	2-1-1	12-3-5	INJ	0-0-0	6-10-0	5-7-0
North Texas												
Middle Tennessee												
UNI*												
Drake*												
Wichita State*												
Evansville*												
Southern Illinois*												
Illinois State*												
Bradley*												
Loyola*												
Indiana State*												
Wichita State*												
Southern Illinois*												
Evansville*												
Bradley*												
Illinois State*												
Indiana State*												
Loyola*												
Drake*												
UNI*												

P-Points; R-Rebounds; A-Assists; DNP-Did Not Play; INJ-Injured; (EX) exhibition; \*MVC game

## 2016-17 Game-By-Game Team Totals

Opponent	MISSOURI STATE										OPPONENTS								
	FG%	(fg-fga)	FT%	(ft-fta)	3fg-a	Reb	PF	AS	ST	Score	FG%	(fg-fga)	FT%	(ft-fta)	3fg-a	Reb	PF	AS	ST
Truman State <sup>(EX)</sup>	.466	27-58	.556	10-18	8-14	47	24	14	10	72-62	.357	20-56	.500	9-18	13-33	26	18	12	5
Northeastern State <sup>(EX)</sup>	.523	34-65	.875	7-8	12-25	51	9	22	10	87-46	.281	16-57	.857	6-7	8-28	22	8	12	8
Memphis	.379	22-58	.765	13-17	3-19	25	18	10	8	60-69	.574	27-47	.714	10-14	5-9	33	21	20	4
Kansas	.533	32-60	.789	15-19	8-15	44	18	10	8	87-64	.357	25-70	.571	8-14	6-24	35	19	10	12
Northwestern	.274	17-62	.875	14-16	4-22	46	13	12	2	52-75	.484	31-64	.692	9-13	4-13	36	15	20	10
USC	.297	19-64	.735	25-34	4-12	36	19	11	5	67-89	.548	34-62	.762	16-21	5-11	38	30	25	10
Alaska Anchorage	.458	22-48	.882	15-17	6-14	29	16	15	9	65-58	.396	21-53	.833	10-12	6-21	22	16	15	14
Little Rock	.365	19-52	.250	1-4	8-15	28	16	9	5	47-58	.440	22-50	.846	11-13	3-10	31	14	7	9
Missouri	.271	16-59	.588	11-17	6-20	37	23	6	7	49-73	.426	23-54	.864	19-22	8-24	42	16	16	12
Oral Roberts	.339	21-62	.833	10-12	4-11	44	20	12	3	56-78	.422	27-64	.905	19-21	5-15	35	17	10	11
Arkansas	.393	22-56	.706	12-17	8-21	39	17	12	1	64-62	.308	20-65	.708	17-24	5-18	40	15	6	7
North Texas																			
Middle Tennessee																			
UNI*																			
Drake*																			
Wichita State*																			
Evansville*																			
Southern Illinois*																			
Illinois State*																			
Bradley*																			
Loyola*																			
Indiana State*																			
Wichita State*																			
Southern Illinois*																			
Evansville*																			
Bradley*																			
Illinois State*																			
Indiana State*																			
Loyola*																			
Drake*																			
UNI*																			

Reb-Rebounds; PF-Personal Fouls; AS-Assists; ST-Steals; Bold indicates home game; (EX) exhibition; \*MVC game

# 2016-17 Overall Statistics

**3-6, 0-0 MVC**

No.	Player	G-GS	Min	Avg	FG-A	Pct	3FG-A	Pct	FT-A	Pct	OR-DR	Reb	Avg	PF-D	A	TO	BS	ST	Pts	Avg		
05	Fruendt,Liza	9-9	263	29.2	46-128	.359	19-51	.373	30-35	.857	4-25	29	3.2	14-0	14	17	1	11	141	15.7		
21	Buckley,Aubrey	9-9	230	25.6	23-62	.371	3-10	.300	32-43	.744	22-21	43	4.8	22-0	7	17	1	5	81	9.0		
02	Hughes,Lexi	9-0	185	20.6	26-65	.400	9-26	.346	9-14	.643	6-20	26	2.9	10-0	14	17	0	5	70	7.8		
22	Willard,Alexa	9-9	197	21.9	19-48	.396	2-10	.200	10-12	.833	7-21	28	3.1	13-0	8	17	3	5	50	5.6		
34	Swartz,Rachel	9-9	189	21.0	18-42	.429	1-2	.500	8-10	.800	17-22	39	4.3	22-0	2	14	6	1	45	5.0		
01	Gitzen,Danielle	9-9	203	22.6	15-44	.341	2-6	.333	8-12	.667	7-20	27	3.0	17-0	23	24	0	9	40	4.4		
30	Ealy,Shameka	9-0	112	12.4	12-40	.300	6-15	.400	2-2	1.000	7-23	30	3.3	16-1	4	10	8	1	32	3.6		
03	Polowy,Lee Ann	9-0	134	14.9	9-32	.281	8-24	.333	4-6	.667	4-14	18	2.0	9-0	8	5	0	5	30	3.3		
11	Calip,Brice	5-0	99	19.8	11-30	.367	0-1	.000	8-11	.727	3-9	12	2.4	7-0	9	12	0	3	30	6.0		
13	Holt,Audrey	9-0	167	18.6	11-30	.367	1-4	.250	5-8	.625	12-12	24	2.7	26-2	7	12	4	3	28	3.1		
40	Osemenam,Onye	2-0	21	10.5	0-0	.000	0-0	.000	0-0	.000	0-1	1	0.5	4-0	1	2	0	0	0	0.0		
Team.....											35-16	51	5.7				9					
Total.....					190-521	.365	51-149	.342	116-153	.758	124-204	328	36.4	160-3	97	156	23	48	547	60.8		
Opponents.....					230-529	.435	47-145	.324	119-154	.773	105-207	312	34.7	163-2	129	127	43	89	626	69.6		

Date	Site	Att.	Opponent	W/L	Score	Record	Point Leader	Rebound Leader	Assist Leader
11/1	Home	2022	Truman State (EX)	W	72-62	--	Fruendt - 19	Ealy/Swartz - 8	Calip/Hughes - 4
11/6	Home	2012	Northeastern State (EX)	W	87-46	--	Polowy - 20	Swartz - 11	Gitzen/Hughes - 5
11/11	Away	945	Memphis	L	60-69	0-1	Fruendt - 17	Willard - 6	Gitzen - 4
11/13	Away	2277	Kansas	W	87-64	1-1	Hughes - 22	Hughes - 8	Calip - 3
11/16	Away	651	Northwestern	L	52-75	1-2	Ealy/Swartz - 10	Swartz - 9	Calip/Polowy - 3
11/22	Neutral	2032	USC@	L	67-89	1-3	Fruendt - 21	Buckley - 7	Gitzen - 4
11/23	Away	1913	Alaska Anchorage@	W	65-58	2-3	Fruendt - 16	Holt - 5	Buckley - 4
11/28	Home	3133	Little Rock	L	47-58	2-4	Buckley/Hughes/Polowy - 9	Willard - 5	Polowy - 4
12/2	Away	2632	Missouri	L	49-73	2-5	Fruendt - 22	Buckley/Ealy - 5	Gitzen - 3
12/7	Away	397	Oral Roberts	L	56-78	2-6	Fruendt - 12	Ealy - 8	Fruendt - 4
12/11	Home	3094	Arkansas	W	64-62	3-6	Fruendt - 23	Swartz - 10	Hughes - 5
12/17	Home		North Texas						
12/19	Home		Middle Tennessee						
12/30	Home		Drake*						
1/1	Home		UNI*						
1/6	Home		Wichita State*						
1/13	Away		Evansville*						
1/15	Away		Southern Illinois*						
1/20	Home		Illinois State*						
1/22	Home		Bradley*						
1/27	Away		Loyola*						
1/29	Away		Indiana*						
2/5	Away		Wichita State*						
2/10	Home		Southern Illinois*						
2/12	Home		Evansville*						
2/17	Away		Bradley*						
2/19	Away		Illinois State*						
2/24	Home		Indiana State*						
2/26	Home		Loyola*						
3/2	Away		Drake*						
3/4	Away		UNI*						

(EX) exhibition; @ - Great Alaska Shootout in Anchorage, Alaska; \*MVC game; \$ - MVC Tournament in Moline, Ill.  
**MSU:** 3-6 overall; 0-0 MVC; 1-1 at home; 2-4 on the road; 0-1 neutral; 0-1 on Monday, 0-1 on Tuesday; 1-2 on Wednesday; 0-2 on Friday, 2-0 on Sunday; 2-4 in November, 1-2 in December; 0-0 vs. ranked opponents  
**Attendance:** Home - 6,227 in 2 dates (3,114 avg.); Away - 8,813 in 6 dates (1,469 avg.); Neutral - 2,032 in 1 date (2,032 avg.);  
 Total - 17,074 in 9 dates (1,897 avg.)

## Missouri State Miscellaneous Statistics

**Missouri State Scoring Margin:** -8.8; **Missouri State Rebound Margin:** +1.8  
**Double-Figure Point Games (21):** Fruendt 7, Buckley 5, Hughes 3, Swartz 2, Calip 1, Willard 1, Ealy 1, Gitzen 1; **Opponents - 27**  
**Double-Figure Rebound Games (1):** Swartz 1; **Opponents - 1**  
**20-Point Games (4):** Fruendt 3, Hughes 1; **Opponents - 1**  
**30-Point Games (0):** Opponents - 0  
**40-Point Games (0):** Opponents - 0  
**Double-Figure Point-Rebound Games (0):** Opponents - 1  
**Double-Figure Point-Assist Games (0):** Opponents - 1  
**Games Leading Missouri State in Scoring:** Fruendt 6, Hughes 2, Buckley 1, Polowy 1, Ealy 1, Swartz 1  
**Games Leading Missouri State in Rebounding:** Willard 2, Buckley 2, Ealy 2, Swartz 2, Hughes 1, Holt 1  
**Games Leading Missouri State in Assists:** Gitzen 3, Calip 2, Polowy 2, Buckley 1, Fruendt 1, Hughes 1  
**Games Leading Missouri State in Steals:** Fruendt 4, Gitzen 3, Buckley 2, Willard 1, Hughes 1

Score by Quarters	1st	2nd	3rd	4th	OT	Total
Missouri State	128	138	135	146	0	547
Opponent	162	162	149	153	0	626

Margin	1	2	3	4	5	6	7	8	9	10	11	12	13	14	15	16	17	18	19	20	21	22	23	24	25	26	27	28	29	30
Win	-	1	-	-	-	-	1	-	-	-	-	-	-	-	-	-	-	-	-	-	-	-	1	-	-	-	-	-	-	
Loss	-	-	-	-	-	-	-	-	1	-	1	-	-	-	-	-	-	-	-	-	-	2	1	1	-	-	-	-	-	

# Game Box Scores

## Game 1 - Nov. 11 at Memphis Memphis 69, Missouri State 60

Official Basketball Box Score -- Game Totals -- Final Statistics  
Missouri State vs Memphis  
11-11-16 7:07 p.m. at Memphis, Tenn. (Elma Roane Fieldhouse)

### Missouri State 60 • 0-1

##	Player	Total			3-Ptr			Rebounds			PF	TP	A	TO	Blk	Stl	Min
		FG-FGA	FG-FGA	FT-FTA	FG-FGA	FG-FGA	FT-FTA	Off	Def	Tot							
21	Buckley,Aubrey	f	2-4	0-0	1-2	0	2	2	3	5	1	0	0	1	28		
22	Willard,Alexa	f	6-10	1-3	0-0	5	1	6	1	13	2	0	0	0	24		
34	Swartz,Rachel	f	2-4	0-0	0-0	0	1	1	3	4	0	0	0	0	21		
01	Gitzen,Danielle	g	1-3	0-1	3-4	1	2	3	3	5	4	3	0	1	21		
05	Fruendt,Liza	g	6-16	1-8	4-4	0	3	3	2	17	0	4	0	3	28		
02	Hughes,Lexi	g	0-4	0-1	1-2	0	0	0	0	1	1	0	0	0	17		
03	Polowy, Lee Ann	g	1-6	1-5	2-2	1	0	1	0	5	0	1	0	0	12		
11	Calip,Brice	g	2-6	0-0	2-3	0	1	1	1	6	1	1	0	1	20		
13	Holt,Audrey	g	2-4	0-0	0-0	4	0	4	3	4	1	1	0	2	20		
30	Ealy,Shameka	g	0-1	0-1	0-0	0	0	0	1	0	0	0	0	0	3		
40	Osemenam,Onye	g	0-0	0-0	0-0	0	0	0	1	0	0	1	0	0	6		
	Team					2	2	4									
	Totals		22-58	3-19	13-17	13	12	25	18	60	10	12	0	8	200		

1st - FG %:	5-14	35.7%	2nd - FG %:	6-18	33.3%	3rd - FG %:	7-15	46.7%	4th - FG %:	4-11	36.4%	Game:	22-58	37.9%	Deadball	
3FG %:	1-5	20.0%	3FG %:	0-7	0.0%	3FG %:	1-3	33.3%	3FG %:	1-4	25.0%		3-19	15.8%	Rebounds	
FT %:	3-4	75.0%	FT %:	0-0	0.0%	FT %:	3-5	60.0%	FT %:	7-8	87.5%		13-17	76.5%		4

### Memphis 69 • 1-0

##	Player	Total			3-Ptr			Rebounds			PF	TP	A	TO	Blk	Stl	Min
		FG-FGA	FG-FGA	FT-FTA	FG-FGA	FG-FGA	FT-FTA	Off	Def	Tot							
10	CREIGHTON, Cheyenne	f	8-12	0-0	0-2	3	6	9	2	16	0	4	0	0	33		
25	PORTER, Brianna	f	0-2	0-0	0-0	0	2	2	4	0	1	3	0	0	13		
01	WILDER-COCHRAN, B.	g	1-2	0-0	5-6	0	3	3	4	7	3	1	0	1	31		
03	WILLIAMS, Taylor	g	7-8	3-3	0-0	1	4	5	2	17	6	4	1	2	34		
02	BARNES, Taylor	g	3-7	0-2	2-2	1	2	3	2	8	4	3	0	1	30		
15	MORRIS, Loysya	g	1-1	0-0	0-0	1	0	1	1	2	1	2	0	0	5		
05	ELMORE, Brea	g	5-12	2-4	1-2	0	1	1	4	13	4	2	1	0	32		
40	MILLER, Damonique	g	0-0	0-0	0-0	1	0	1	0	0	0	1	0	0	3		
44	BAJIC, Milena	g	2-3	0-0	2-2	2	1	3	2	6	1	0	1	0	19		
	Team					1	4	5									
	Totals		27-47	5-9	10-14	10	23	33	21	69	20	27	3	4	200		

1st - FG %:	8-14	57.1%	2nd - FG %:	4-12	33.3%	3rd - FG %:	8-11	72.7%	4th - FG %:	7-10	70.0%	Game:	27-47	57.4%	Deadball	
3FG %:	1-1	100.0%	3FG %:	0-4	0.0%	3FG %:	2-2	100.0%	3FG %:	2-2	100.0%		5-9	55.6%	Rebounds	
FT %:	0-0	0.0%	FT %:	2-2	100.0%	FT %:	3-6	50.0%	FT %:	5-6	83.3%		10-14	71.4%		2

Officials: R-Andrew Bills, U1-Stephanie Britt, U2-Josh Hall  
Technical fouls: Missouri State-None. Memphis-None.  
Attendance: 945  
End Game: 8:55 PM  
Duration: 1:48

Score by periods	1st	2nd	3rd	4th	Total
Missouri State	14	12	18	16	60
Memphis	17	10	21	21	69

## Game 2 - Nov. 13 at Kansas Missouri State 87, Kansas 64

Official Basketball Box Score -- Game Totals -- Final Statistics  
Missouri State vs Kansas  
11-13-16 2:05 p.m. at Lawrence, Kan. (Allen Fieldhouse)

### Missouri State 87 • 1-1

##	Player	Total			3-Ptr			Rebounds			PF	TP	A	TO	Blk	Stl	Min
		FG-FGA	FG-FGA	FT-FTA	FG-FGA	FG-FGA	FT-FTA	Off	Def	Tot							
21	Buckley,Aubrey	f	2-3	1-2	5-6	0	2	2	4	10	0	1	0	0	10		
34	Swartz,Rachel	f	0-2	0-0	0-0	2	4	6	1	0	0	3	0	0	16		
01	Gitzen,Danielle	g	2-4	0-0	1-2	1	0	1	2	5	1	2	0	0	11		
05	Fruendt,Liza	g	7-14	1-5	3-5	0	7	7	1	18	2	1	0	4	26		
22	Willard,Alexa	g	2-4	0-0	2-2	0	2	2	2	6	0	4	0	1	21		
02	Hughes,Lexi	g	9-13	4-4	0-0	3	5	8	1	22	1	4	0	0	23		
03	Polowy, Lee Ann	g	1-3	1-2	0-0	0	0	2	0	3	1	0	0	2	13		
11	Calip,Brice	g	6-11	0-0	2-2	1	3	4	3	14	3	4	0	1	26		
13	Holt,Audrey	g	2-2	1-1	2-2	0	5	5	1	7	1	0	2	0	29		
30	Ealy,Shameka	g	1-4	0-1	0-0	1	2	3	0	2	0	0	0	0	10		
40	Osemenam,Onye	g	0-0	0-0	0-0	0	1	1	3	0	1	1	0	0	15		
	Team					1	2	3									
	Totals		32-60	8-15	15-19	9	35	44	18	87	10	22	2	8	200		

1st - FG %:	6-13	46.2%	2nd - FG %:	9-15	60.0%	3rd - FG %:	6-15	40.0%	4th - FG %:	11-17	64.7%	Game:	32-60	53.3%	Deadball	
3FG %:	1-2	50.0%	3FG %:	3-4	75.0%	3FG %:	2-4	50.0%	3FG %:	2-5	40.0%		8-15	53.3%	Rebounds	
FT %:	4-6	66.7%	FT %:	2-2	100.0%	FT %:	1-2	50.0%	FT %:	8-9	88.9%		15-19	78.9%		1

### Kansas 64 • 0-1

##	Player	Total			3-Ptr			Rebounds			PF	TP	A	TO	Blk	Stl	Min
		FG-FGA	FG-FGA	FT-FTA	FG-FGA	FG-FGA	FT-FTA	Off	Def	Tot							
25	ManningAllen,Caelynn	f	3-4	0-0	0-0	2	3	5	2	6	1	0	1	0	19		
02	Calvert, McKenzie	g	7-21	2-10	4-4	0	4	4	20	2	4	2	3	3	34		
03	Washington, Jessica	g	5-21	2-8	3-6	0	4	4	3	15	4	3	0	3	32		
22	Cheadle, Chayla	g	0-2	0-1	0-0	2	5	7	1	0	1	0	0	0	26		
33	Kopatich, Kylee	g	3-7	1-3	0-0	1	1	2	4	7	0	2	0	1	24		
00	Umeri, Sydney	g	1-1	0-0	1-2	2	0	2	0	3	0	1	0	0	19		
04	Brown, Jada	g	3-5	0-0	0-2	3	0	3	1	6	0	2	1	0	18		
15	Robertson, Aisia	g	3-8	1-2	0-0	1	2	3	3	7	1	5	1	3	20		
20	Christopher, Jayde	g	0-1	0-0	0-0	0	1	1	1	0	1	1	1	2	8		
	Team					2	2	4									
	Totals		25-70	6-24	8-14	13	22	35	19	64	10	18	6	12	200		

1st - FG %:	5-15	33.3%	2nd - FG %:	11-20	55.0%	3rd - FG %:	4-17	23.5%	4th - FG %:	5-18	27.8%	Game:	25-70	35.7%	Deadball	
3FG %:	1-4	25.0%	3FG %:	4-8	50.0%	3FG %:	1-3	33.3%	3FG %:	0-9	0.0%		6-24	25.0%	Rebounds	
FT %:	0-2	0.0%	FT %:	0-0	0.0%	FT %:	6-10	60.0%	FT %:	2-2	100.0%		8-14	57.1%		3

Officials: Michael McConnell, Billy Smith, Missy Brooks  
Technical fouls: Missouri State-None. Kansas-None.  
Attendance: 2277

Score by periods	1st	2nd	3rd	4th	Total
Missouri State	17	23	15	32	87
Kansas	11	26	15	12	64

## Game 3 - Nov. 16 at Northwestern Northwestern 75, Missouri State 52

Official Basketball Box Score -- Game Totals -- Final Statistics  
Missouri State vs NORTHWESTERN  
11-16-16 7 P.M. at WELSH-RYAN ARENA (EVANSTON, ILL.)

### Missouri State 52 • 1-2

##	Player	Total			3-Ptr			Rebounds			PF	TP	A	TO	Blk	Stl	Min
		FG-FGA	FG-FGA	FT-FTA	FG-FGA	FG-FGA	FT-FTA	Off	Def	Tot							
21	Buckley,Aubrey	f	3-7	0-2	3-4	2	6	8	1	9	1	0	1	0	24		
1	Gitzen,Danielle	f	0-7	0-2	2-2	2	3	5	1	2	2	3	0	0	21		
22	Willard,Alexa	g	1-4	0-1	2-2	0	1	1	3	4	1	3	1	2	20		
34	Swartz,Rachel	g	3-7	0-0	4-4	5	4	9	2	10	0	1	0	0	20		
5	Fruendt,Liza	g	3-10	1-4	2-2	0	1	1	1	9	1	1	0	0	25		
11	Calip,Brice	g	1-5	0-1	1-2	1	1	2	2	3	3	2	0	0	21		
13	Holt,Audrey	g	0-4	0-1	0-0	2	0	2	0	0	1	0	0	0	16		
2	Hughes,Lexi	g	2-7	1-4	0-0	0	1	1	1	5	1	1	0	0	16		
3	Polowy, Lee Ann	g	0-2	0-2	0-0	0	3	3	0	0	3	1	0	0	17		
30	Ealy,Shameka	g	4-9	2-5	0-0	0	5	5	0	10	0	1	1	0	20		
	Team					8	1	9									
	Totals		17-62	4-22	14-16	20	26	46	13	52	12	17	3	2	200		

1st - FG %:	6-20	30.0%	2nd - FG %:	4-14	28.6%	3rd - FG %:	5-17	29.4%	4th - FG %:	2-11	18.2%	Game:	17-62	27.4%	Deadball	
3FG %:	1-8	12.5%	3FG %:	2-6	33.3%	3FG %:	0-5	0.0%	3FG %:	1-3	33.3%		4-22	18.2%	Rebounds	
FT %:	0-0	0.0%	FT %:	5-6	83.3%	FT %:	2-2	100.0%	FT %:	7-8	87.5%		14-16	87.5%		1

### NORTHWESTERN 75 • 3-0

##	Player	Total			3-Ptr			Rebounds			PF	TP	A	TO	Blk	Stl	Min
		FG-FGA	FG-FGA	FT-FTA	FG-FGA	FG-FGA	FT-FTA	Off	Def	Tot							
11	Douglas, Lauren	f	4-12	0-2	2-2	0	4	4	4	10	1	1	4	1	18		
34	Hamilton, Oceana	c	4-7														

# Game Box Scores

## Game 5 - Nov. 23 at Alaska Anchorage Missouri State 65, Alaska Anchorage 58

Official Basketball Box Score -- Game Totals -- Final Statistics  
Missouri State vs Alaska Anchorage  
11-23-16 2 pm at Alaska Airlines Center - Anchorage, AK

### Missouri State 65 • 2-3

#	Player	Total			3-Ptr			Rebounds			PF	TP	A	TO	Blk	Stl	Min
		FG	FGA	FT	FTA	Off	Def	Tot									
21	Buckley,Aubrey	f	4-8	0-1	4-4	2	2	4	2	12	4	6	0	1	28		
34	Swartz,Rachel	f	1-1	0-0	0-0	1	1	2	4	2	1	3	1	0	21		
01	Gitzen,Danielle	g	2-3	0-0	0-0	0	1	1	4	4	1	3	0	1	17		
05	Fruendt,Liza	g	4-11	3-6	5-6	1	2	3	1	16	2	2	0	1	32		
22	Willard,Alexa	g	3-7	1-2	0-0	0	0	0	1	7	1	0	0	0	21		
02	Hughes,Lexi	g	3-6	1-2	3-3	0	2	2	0	10	1	0	0	4	24		
03	Polowy, Lee Ann	g	1-3	1-3	0-0	0	4	4	1	3	0	0	0	0	16		
11	Calip,Brice	g	1-2	0-0	2-2	1	1	2	0	4	1	3	0	1	12		
13	Holt,Audrey	g	2-5	0-0	1-2	2	3	5	2	5	3	3	1	0	21		
30	Ealy,Shameka	g	1-2	0-0	0-0	0	1	1	1	2	1	2	1	1	8		
Team						3	2	5									
Totals			22-48	6-14	15-17	10	19	29	16	65	15	22	4	9	200		
1st - FG %:		4-12	33.3%	2nd: 6-10	60.0%	3rd: 4-12	33.3%	4th: 8-14	57.1%	Game: 22-48		45.8%	Deadball				
3FG %:		0-4	0.0%	2-3	66.7%	1-4	25.0%	3-3	100.0%	6-14		42.9%	Rebounds				
FT %:		4-4	100.0%	4-4	100.0%	4-6	66.7%	3-3	100.0%	15-17		88.2%	4,1				

### Alaska Anchorage 58 • 4-2

#	Player	Total			3-Ptr			Rebounds			PF	TP	A	TO	Blk	Stl	Min
		FG	FGA	FT	FTA	Off	Def	Tot									
15	Devine,Alysha	f	1-6	1-3	0-0	0	0	0	5	3	0	5	0	0	31		
24	Afoa,Sierra	f	1-2	0-1	0-0	2	2	4	1	2	0	0	0	2	17		
01	Gitzen,Danielle	g	3-8	2-2	0-0	1	1	2	1	0	0	3	0	2	31		
05	Fruendt,Liza	g	1-9	1-3	0-0	2	0	2	3	3	0	1	0	0	22		
22	Willard,Alexa	g	1-3	0-1	0-0	1	4	5	1	2	1	2	0	0	16		
02	Hughes,Lexi	g	4-6	1-3	0-0	1	3	4	0	9	1	3	0	1	23		
03	Polowy, Lee Ann	g	3-4	3-3	0-0	1	1	2	1	9	4	0	0	1	18		
13	Holt,Audrey	g	1-3	0-0	1-2	2	2	4	1	3	0	2	0	0	25		
30	Ealy,Shameka	g	0-3	0-0	0-0	0	1	1	2	0	1	1	0	1	13		
Team						1	0	1									
Totals			19-52	8-15	1-4	12	16	28	16	47	9	17	1	5	200		
1st - FG %:		5-14	35.7%	2nd: 4-12	33.3%	3rd: 5-14	35.7%	4th: 5-12	41.7%	Game: 19-52		36.5%	Deadball				
3FG %:		3-4	75.0%	2-5	40.0%	1-4	25.0%	2-2	100.0%	8-15		53.3%	Rebounds				
FT %:		2-2	100.0%	2-2	100.0%	0-0	0.0%	0-0	0.0%	1-4		25.0%	1,1				

Officials: Bruce Corson, Shannon Conley, James Leitch  
Technical fouls: Missouri State-None. Alaska Anchorage-None.  
Attendance: 1913

3C1 Great Alaska Shootout Game 3 (3rd place)  
3C1 Player of the Game: L. Fruendt (MSU)

Score by periods	1st	2nd	3rd	4th	Total
Missouri State	12	18	13	22	65
Alaska Anchorage	17	14	9	18	58

## Game 6 - Nov. 28 vs. Little Rock Little Rock 58, Missouri State 47

Official Basketball Box Score -- Game Totals -- Final Statistics  
Little Rock vs Missouri State  
11-28-16 7:02 p.m. at Springfield, Mo. - JQH Arena

### Little Rock 58 • 3-4

#	Player	Total			3-Ptr			Rebounds			PF	TP	A	TO	Blk	Stl	Min
		FG	FGA	FT	FTA	Off	Def	Tot									
00	DeGray, Ronjanae	f	1-5	0-0	4-4	4	3	7	2	6	0	1	1	0	37		
40	Pratt, Kaitlyn	f	3-5	0-0	3-3	1	2	3	5	9	0	2	0	0	19		
02	Townson, Monique	g	4-10	1-4	0-2	2	2	4	1	9	5	3	0	2	39		
13	Collins, Sharde'	g	8-19	0-3	0-0	0	1	1	3	16	0	3	0	1	39		
23	Collier, Kyra	g	3-6	1-2	4-4	0	7	7	1	11	2	2	0	3	35		
12	Chastain, Sydney	g	0-0	0-0	0-0	0	0	0	0	0	0	0	0	0	1		
25	Hurlburt, Anna	g	1-3	0-0	0-0	2	2	4	1	2	0	1	2	3	22		
30	DeGray, Raeyana	g	2-2	1-1	0-0	1	1	2	1	5	0	1	0	0	8		
Team						2	2	3									
Totals			22-50	3-10	11-13	11	20	31	14	58	7	14	3	9	200		
1st - FG %:		6-18	33.3%	2nd: 4-10	40.0%	3rd: 8-14	57.1%	4th: 4-8	50.0%	Game: 22-50		44.0%	Deadball				
3FG %:		0-2	0.0%	1-2	50.0%	2-4	50.0%	0-2	0.0%	3-10		30.0%	Rebounds				
FT %:		1-1	100.0%	4-6	66.7%	0-0	0.0%	6-6	100.0%	11-13		84.6%	2,3				

### Missouri State 47 • 2-4

#	Player	Total			3-Ptr			Rebounds			PF	TP	A	TO	Blk	Stl	Min
		FG	FGA	FT	FTA	Off	Def	Tot									
21	Buckley,Aubrey	f	4-11	1-2	0-2	2	2	4	2	9	0	4	0	0	31		
34	Swartz,Rachel	f	2-5	0-1	0-0	1	1	2	3	4	0	2	0	1	21		
01	Gitzen,Danielle	g	3-8	2-2	0-0	1	2	3	8	2	3	0	2	31			
05	Fruendt,Liza	g	1-9	1-3	0-0	2	0	2	3	3	0	1	0	0	22		
22	Willard,Alexa	g	1-3	0-1	0-0	1	4	5	1	2	1	2	0	0	16		
02	Hughes,Lexi	g	4-6	1-3	0-0	1	3	4	0	9	1	3	0	1	23		
03	Polowy, Lee Ann	g	3-4	3-3	0-0	1	1	2	1	9	4	0	0	1	18		
13	Holt,Audrey	g	1-3	0-0	1-2	2	2	4	1	3	0	2	0	0	25		
30	Ealy,Shameka	g	0-3	0-0	0-0	0	1	1	2	0	1	0	1	0	13		
Team						1	0	1									
Totals			19-52	8-15	1-4	12	16	28	16	47	9	17	1	5	200		
1st - FG %:		5-14	35.7%	2nd: 4-12	33.3%	3rd: 5-14	35.7%	4th: 5-12	41.7%	Game: 19-52		36.5%	Deadball				
3FG %:		3-4	75.0%	2-5	40.0%	1-4	25.0%	2-2	100.0%	8-15		53.3%	Rebounds				
FT %:		0-0	0.0%	1-4	25.0%	0-0	0.0%	0-0	0.0%	1-4		25.0%	1,1				

Officials: Lisa Mattingly, Amy Bonner, Ty Bills  
Technical fouls: Little Rock-None. Missouri State-None.  
Attendance: 3133

Pratt (LR) fouls out at 0:27 of 4th qtr.

Score by periods	1st	2nd	3rd	4th	Total
Little Rock	13	13	18	14	58
Missouri State	13	11	11	12	47

## Game 7 - Dec. 2 at Missouri Missouri 73, Missouri State 49

Official Basketball Box Score -- Game Totals -- Final Statistics  
Missouri State vs Mizzou  
12-02-16 7 p.m. at Mizzou Arena

### Missouri State 49 • 2-5

#	Player	Total			3-Ptr			Rebounds			PF	TP	A	TO	Blk	Stl	Min
		FG	FGA	FT	FTA	Off	Def	Tot									
21	Buckley,Aubrey	f	0-8	0-1	0-0	3	2	5	3	0	0	3	0	0	24		
34	Swartz,Rachel	f	1-2	0-0	2-4	2	1	3	1	4	0	1	0	0	19		
01	Gitzen,Danielle	g	2-4	0-0	0-2	0	3	3	0	4	3	3	0	4	27		
05	Fruendt,Liza	g	7-16	3-7	5-6	0	4	4	1	22	1	0	0	0	31		
22	Willard,Alexa	g	1-4	0-1	2-2	0	1	1	3	4	1	1	0	1	19		
02	Hughes,Lexi	g	1-6	0-3	1-1	1	3	4	4	3	0	4	0	0	18		
03	Polowy, Lee Ann	g	1-4	1-3	1-2	0	2	2	2	4	0	1	0	1	25		
13	Holt,Audrey	g	0-3	0-1	0-0	0	1	1	4	0	0	1	0	1	19		
30	Ealy,Shameka	g	3-12	2-4	0-0	3	2	5	5	8	1	3	0	0	18		
Team						6	3	9									
Totals			16-59	6-20	11-17	15	22	37	23	49	6	19	0	7	200		
1st - FG %:		7-15	46.7%	2nd: 2-17	11.8%	3rd: 5-17	29.4%	4th: 2-10	20.0%	Game: 16-59		27.1%	Deadball				
3FG %:		4-7	57.1%	1-3	33.3%	1-6	16.7%	0-4	0.0%	6-20		30.0%	Rebounds				
FT %:		0-0	0.0%	6-10	60.0%	1-1	100.0%	4-6	66.7%	11-17		64.7%	4				

### Mizzou 73 • 6-2

#	Player	Total			3-Ptr			Rebounds			PF	TP	A	TO	Blk	Stl	Min
		FG	FGA	FT	FTA	Off	Def	Tot									
04	PORTER, Cierra	f	2-5	1-1	8-8	2	2	4	3	13	0	1	3	0	26		
11	CUNNINGHAM, Sophie	g	9-14	0-3	4-4	0	7	7	2	22	6	1	0	1	32		
03	CUNNINGHAM, Lindsey	g	4-6	3-5	2-2												

# Game Box Scores

## Game 9 - Dec. 11 vs. Arkansas Missouri State 64, Arkansas 62

Official Basketball Box Score -- Game Totals -- Final Statistics  
Arkansas vs Missouri State  
12-11-16 2:07 p.m. at Springfield, Mo. - JQH Arena

### Arkansas 62 • 9-1

#	Player	Pos	Total			3-Ptr			Rebounds			PF	TP	A	TO	Blk	Stl	Min
			FG	FGA	FT	FTA	FG	FGA	FT	FTA	Off							
00	JACKSON, Jessica	f	2	9	1	5	6	6	2	7	9	4	11	0	2	0	0	27
22	ZIMMERMAN, Bailey	f	2	7	0	2	4	4	3	1	4	0	8	2	1	0	2	31
35	COOLEY, Alecia	c	2	5	0	0	0	0	4	1	5	3	4	1	2	1	0	20
03	MONK, Malica	g	6	16	1	2	1	4	2	1	3	1	14	2	1	0	1	37
14	MASON, Jailyn	g	0	6	0	1	0	0	1	2	3	2	0	0	0	0	1	22
04	SWENSON, Keiryn	g	2	3	0	1	1	1	4	1	5	2	5	0	2	2	0	21
10	WILLIAMS, Kiara	g	1	2	0	0	0	2	1	2	3	1	2	0	0	1	0	12
21	COSPER, Devin	g	5	17	3	7	5	7	0	4	4	2	18	1	1	0	3	30
Team									2 2 4									
Totals			20	65	5	18	17	24	19	21	40	15	62	6	10	4	7	200
1st - FG %:			6-16	37.5%	2nd: 5-16	31.3%	3rd: 4-16	25.0%	4th: 5-17	29.4%	Game: 20-65		30.8%	Deadball		Rebounds		
3FG %:			2-4	50.0%	2-4	50.0%	0-3	0.0%	1-7	14.3%	5-18		27.8%	4,2				
FT %:			4-8	50.0%	3-3	100.0%	6-6	100.0%	4-7	57.1%	17-24		70.8%					

### Missouri State 64 • 3-6

#	Player	Pos	Total			3-Ptr			Rebounds			PF	TP	A	TO	Blk	Stl	Min
			FG	FGA	FT	FTA	FG	FGA	FT	FTA	Off							
21	Buckley,Aubrey	f	3	6	1	1	7	9	6	2	8	2	14	1	1	0	1	32
34	Swartz,Rachel	f	3	6	0	0	0	0	3	7	10	3	6	0	1	3	0	26
01	Gitzen,Danielle	g	0	3	0	1	0	0	0	3	3	0	0	3	0	0	0	23
05	Fruendt,Liza	g	9	23	5	9	0	0	0	3	3	1	23	2	3	1	0	39
22	Willard,Alexa	g	2	4	0	1	1	2	1	6	7	1	5	0	4	2	0	30
02	Hughes,Lexi	g	4	10	2	7	2	4	0	3	3	3	12	5	2	0	0	29
03	Polowy, Lee Ann	g	0	1	0	1	0	0	0	0	0	0	0	0	1	0	0	4
13	Holt,Audrey	g	1	1	0	0	0	0	0	1	1	5	2	1	0	0	0	5
30	Ealy,Shameka	g	0	2	0	1	2	2	0	1	1	2	2	0	2	1	0	12
Team									2 1 3									
Totals			22	56	8	21	12	17	12	27	39	17	64	12	15	7	1	200
1st - FG %:			6-15	40.0%	2nd: 3-14	21.4%	3rd: 9-13	69.2%	4th: 4-14	28.6%	Game: 22-56		39.3%	Deadball		Rebounds		
3FG %:			3-3	100.0%	2-7	28.6%	3-6	50.0%	0-5	0.0%	8-21		38.1%	4,2				
FT %:			0-0	0.0%	7-8	87.5%	1-2	50.0%	4-7	57.1%	12-17		70.6%					

Officials: Marty Cook, Marla Gearhart, Marcus Clayton

Technical fouls: Arkansas-None. Missouri State-None.

Attendance: 3094

Holt (MSU) fouls out at 3:31 of 2nd half.

Score by periods	1st	2nd	3rd	4th	Total	In	Off	2nd	Fast	Bench
Arkansas	18	15	14	15	62	Points	Paint	T/O	Chance	Break
Missouri State	15	15	22	12	64	AR	22	12	20	4
						MSU	18	10	8	16

Last FG - AR 4th-00:11, MSU 4th-00:01. Score tied - 7 times.  
Largest lead - AR by 8 1st-04:53, MSU by 7 3rd-00:45. Lead changed - 9 times.  
AR led for 19:35. MSU led for 16:45. Game was tied for 03:40.

## Player Profiles



### Danielle Gitzen

**1**

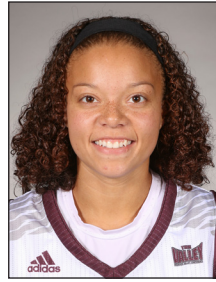
**Guard**  
**5-10 • Sophomore**  
**Victoria, Minn.**  
**Chanhassen High**



- Owns Chanhassen High records for career rebounds (500) and steals (274), and ranks second at her high school in career points (1,118) and assists (252)
- Miss Minnesota Basketball semifinalist as a senior
- Made first career start Jan. 10, 2016 vs. UNI, finishing with 8 rebounds
- Career best scoring effort came with 14 points against Drake in the 2016 MVC Tournament semifinal victory
- Started MSU's last 28 games

#### 2016-17 Game-By-Game for Gitzen

Opponent	GS	Min.	FG-A	3FG-A	FT-A	O-D-R	PF	A	TO	BS	S	PTS
at Memphis	*	21	1-3	0-1	3-4	1-2-3	3	4	3	0	1	5
at Kansas	*	11	2-4	0-0	1-2	1-0-1	2	1	2	0	0	5
at Northwestern	*	21	0-7	0-2	2-2	2-3-5	1	2	3	0	0	2
vs. USC	*	23	5-8	0-0	2-2	0-3-3	1	4	3	0	0	12
at AK Anchorage	*	17	2-3	0-0	0-0	0-1-1	4	1	3	0	1	4
Little Rock	*	31	3-8	2-2	0-0	1-2-3	3	2	3	0	2	8
at Missouri	*	27	2-4	0-0	0-2	0-3-3	0	3	3	0	4	4
at Oral Roberts	*	29	0-4	0-0	0-0	2-3-5	3	3	4	0	1	0
Arkansas	*	23	0-3	0-1	0-0	0-3-3	0	3	0	0	0	0
North Texas												
Middle Tennessee												
UNI*												
Drake*												
Wichita State*												
at Evansville*												
at Southern Illinois*												
Illinois State*												
Bradley*												
at Loyola*												
at Indiana State*												
at Wichita State*												
Southern Illinois*												
Evansville*												
at Bradley*												
at Illinois State*												
Indiana State*												
Loyola*												
at Drake*												
at UNI*												



### Lexi Hughes

**2**

**Guard**  
**5-8 • Senior**  
**Kansas City, Kan.**  
**Bishop Miege High**



- Made at least one 3-pointer in 69 of 94 career games in which she has an attempt
- MVC leader in 3-point shooting at 46.6 percent based on a minimum of one make per game as a freshman.
- Made 16 consecutive free throws from Nov. 28, 2014-Jan. 23, 2015
- Her .364 career 3-point percentage ranks 12th in MSU history based on a minimum 100 attempts, while she ranks 11th in total makes (129) and 10th in attempts (354)
- Became 60th Lady Bear with 500 career points on Feb. 5, 2016 at UNI, and currently sits 49th on the scoring list with 653 points

#### 2016-17 Game-By-Game for Hughes

Opponent	GS	Min.	FG-A	3FG-A	FT-A	O-D-R	PF	A	TO	BS	S	PTS
at Memphis		17	0-4	0-1	1-2	0-0-0	1	1	0	0	0	1
at Kansas		23	9-13	4-4	0-0	3-5-8	1	1	4	0	0	22
at Northwestern		16	2-7	1-4	0-0	0-1-1	1	1	1	0	0	5
vs. USC		14	1-4	0-0	0-2	0-1-1	1	1	2	0	0	2
at AK Anchorage		24	3-6	1-2	3-3	0-2-2	0	1	0	0	4	10
Little Rock		23	4-6	1-3	0-0	1-3-4	0	1	3	0	1	9
at Missouri		18	1-6	0-3	1-1	1-3-4	4	0	4	0	0	3
at Oral Roberts		21	2-9	0-2	2-2	1-2-3	0	3	1	0	0	6
Arkansas		29	4-10	2-7	2-4	0-3-3	3	5	2	0	0	12
North Texas												
Middle Tennessee												
UNI*												
Drake*												
Wichita State*												
at Evansville*												
at Southern Illinois*												
Illinois State*												
Bradley*												
at Loyola*												
at Indiana State*												
at Wichita State*												
Southern Illinois*												
Evansville*												
at Bradley*												
at Illinois State*												
Indiana State*												
Loyola*												
at Drake*												
at UNI*												

#### Career Miscellaneous

Category	Games	Category	Games
Games played	107	2+ 3-pointers	36
Games started	4	3+ assists	19
Double-figure points	20	20+ minutes played	42
Leading MSU in scoring	6		

## Player Profiles



### Lee Ann Polowy

**3**

**Guard**

**5-7 • Junior**

**Jefferson City, Mo.**

**Blair Oaks High**



- Blair Oaks High career leader in points (1,912) and 3-pointers (210)
- Three-time all-state selection, including a first-team nod as a junior and senior
- Finished prep career with eight school records, including 43 points in a game
- 92 percent of her career made field goals and 82 percent of attempts are 3-pointers

#### 2016-17 Game-By-Game for Polowy

Opponent	GS	Min.	FG-A	3FG-A	FT-A	O-D-R	PF	A	TO	BS	S	PTS
at Memphis	12	1-6	1-5	2-22	1-0-1	0	0	1	0	0	0	5
at Kansas	13	1-3	1-2	0-0	0-2-2	0	1	0	0	2	3	3
at Northwestern	17	0-2	0-2	0-0	0-3-3	0	3	1	0	0	0	0
vs. USC	14	0-5	0-2	1-2	2-0-2	2	0	1	0	1	1	1
at AK Anchorage	16	1-3	1-3	0-0	0-4-4	1	0	0	0	0	0	3
Little Rock	18	3-4	3-3	0-0	1-1-2	1	4	0	0	1	9	9
at Missouri	25	1-4	1-3	1-2	0-2-2	2	0	1	0	1	4	4
at Oral Roberts	15	2-4	1-3	0-0	0-2-2	3	0	0	0	0	5	5
Arkansas	4	0-1	0-1	0-0	0-0-0	0	0	1	0	0	0	0
North Texas												
Middle Tennessee												
UNI*												
Drake*												
Wichita State*												
at Evansville*												
at Southern Illinois*												
Illinois State*												
Bradley*												
at Loyola*												
at Indiana State*												
at Wichita State*												
Southern Illinois*												
Evansville*												
at Bradley*												
at Illinois State*												
Indiana State*												
Loyola*												
at Drake*												
at UNI*												

#### Career Miscellaneous

Category	Games	Category	Games
Games played	57	2+ 3-pointers	7



### Liza Fruendt

**5**

**Guard**

**5-10 • Junior**

**Batavia, Ill.**

**Batavia High**



- Batavia High's career scoring leader with 1,921 points
- MVC Scholar-Athlete Second Team pick in 2016
- Scored 18 points in her first career game, Nov. 14, 2014 at Memphis
- First MSU freshman to score in double figures in her first three career games since Jackie Stiles in 1997. Stiles scored at least 10 points in eight consecutive games to begin her career.
- MVC Newcomer of the Week on Nov. 24, 2014
- One of 11 MSU freshman to average at least 10 points, scoring 259 points in 2014-15 to rank 17th in total scoring among rookies
- Ninth player to average double figures as a freshman and sophomore at MSU
- Scored at least 10 points in 40 of 68 career games
- Ranks 15th in MSU history in 3-point makes (119), 13th in attempts (343), and 16th in accuracy (.347)
- Became 61st Lady Bear with 500 career points on Feb. 7, 2016 at Drake, and currently sits 39th on the scoring list with 774 points
- Has two career 3-pointers on MSU's final possession to force overtime - Feb. 5, 2016 at UNI and Feb. 12, 2016 vs. Loyola

#### 2016-17 Game-By-Game for Fruendt

Opponent	GS	Min.	FG-A	3FG-A	FT-A	O-D-R	PF	A	TO	BS	S	PTS
at Memphis	*	28	6-16	1-8	4-4	0-3-3	2	0	4	0	3	17
at Kansas	*	26	7-14	1-5	3-5	0-7-7	1	2	1	0	4	18
at Northwestern	*	25	3-10	1-4	2-2	0-1-1	1	1	1	0	0	9
vs. USC	*	25	5-15	2-5	9-10	1-0-1	4	2	3	0	2	21
at AK Anchorage	*	32	4-11	3-6	5-6	1-2-3	1	2	2	0	1	16
Little Rock	*	22	1-9	1-3	0-0	2-0-2	3	0	1	0	0	3
at Missouri	*	31	7-16	3-7	5-6	0-4-4	1	1	0	0	0	22
at Oral Roberts	*	35	4-14	2-4	2-2	0-5-5	0	4	2	0	1	12
Arkansas	*	39	9-23	5-9	0-0	0-3-3	1	2	3	1	0	23
North Texas												
Middle Tennessee												
UNI*												
Drake*												
Wichita State*												
at Evansville*												
at Southern Illinois*												
Illinois State*												
Bradley*												
at Loyola*												
at Indiana State*												
at Wichita State*												
Southern Illinois*												
Evansville*												
at Bradley*												
at Illinois State*												
Indiana State*												
Loyola*												
at Drake*												
at UNI*												

#### Career Miscellaneous

Category	Games	Category	Games
Games played	68	2+ 3-pointers	36
Games started	20	4+ field goals	39
Double-figure points	40	Double-doubles	1
20+ points	6	20+ minutes played	42

## Player Profiles



### Brice Calip

**11**  
**Guard**  
**5-8 • Freshman**  
**Sapulpa, Okla.**  
**Sapulpa High**



- Finalist for Oklahoma Player of the Year as a senior
- Scored 1,368 points and grabbed 765 rebounds in her prep career
- Averaged at least 3.0 assists and 3.3 steals per game in each high school season

#### 2016-17 Game-By-Game for Calip

Opponent	GS	Min.	FG-A	3FG-A	FT-A	O-D-R	PF	A	TO	BS	S	PTS
at Memphis	20	2-6	0-0	2-3	0-1-1	1	1	1	0	1		6
at Kansas	26	6-11	0-0	2-2	1-3-4	3	3	4	0	1		14
at Northwestern	21	1-5	0-1	1-2	1-1-2	2	3	2	0	0		3
vs. USC	20	1-6	0-0	1-2	0-3-3	1	1	2	0	0		3
at AK Anchorage	12	1-2	0-0	2-2	1-1-2	0	1	3	0	1		4
Little Rock						DNP						
at Missouri						DNP						
at Oral Roberts						DNP						
Arkansas						DNP						
North Texas												
Middle Tennessee												
UNI*												
Drake*												
Wichita State*												
at Evansville*												
at Southern Illinois*												
Illinois State*												
Bradley*												
at Loyola*												
at Indiana State*												
at Wichita State*												
Southern Illinois*												
Evansville*												
at Bradley*												
at Illinois State*												
Indiana State*												
Loyola*												
at Drake*												
at UNI*												



### Audrey Holt

**13**  
**Forward**  
**6-1 • Junior**  
**Columbia, Mo.**  
**Rock Bridge High**



- Member of three Missouri Class 5 state championship teams at Rock Bridge High in Columbia
- Shot at least 51 percent from the field during all four high school seasons
- Also a member of the the Rock Bridge volleyball and track and field teams
- Made first career start on Jan. 10, 2016 vs. UNI, grabbing 11 rebounds in 36 minutes
- 48.6 percent of her career rebounds have come on the offensive end

#### 2016-17 Game-By-Game for Holt

Opponent	GS	Min.	FG-A	3FG-A	FT-A	O-D-R	PF	A	TO	BS	S	PTS
at Memphis	20	2-4	0-0	0-0	4-0-4	3	1	1	0	2		4
at Kansas	29	2-2	1-1	2-2	0-5-5	1	1	0	2	0		7
at Northwestern	16	0-4	0-1	0-0	2-0-2	2	0	0	1	0		0
vs. USC	16	2-5	0-1	0-0	0-0-0	5	1	2	0	0		4
at AK Anchorage	21	2-5	0-0	1-2	2-3-5	2	3	3	1	0		5
Little Rock	25	1-3	0-0	1-2	2-2-4	1	0	2	0	0		3
at Missouri	19	0-3	0-1	0-0	0-1-1	4	0	1	0	1		0
at Oral Roberts	16	1-3	0-0	1-2	2-0-2	3	0	2	1	0		3
Arkansas	5	1-1	0-0	0-0	0-1-1	5	1	0	0	0		2
North Texas												
Middle Tennessee												
UNI*												
Drake*												
Wichita State*												
at Evansville*												
at Southern Illinois*												
Illinois State*												
Bradley*												
at Loyola*												
at Indiana State*												
at Wichita State*												
Southern Illinois*												
Evansville*												
at Bradley*												
at Illinois State*												
Indiana State*												
Loyola*												
at Drake*												
at UNI*												

#### Career Miscellaneous

Category	Games	Category	Games
Games played	66	10+ rebounds	1
Games started	19	20+ minutes played	35
5+ rebounds	22		

## Player Profiles



### Aubrey Buckley

**21**

**Forward**  
**6-2 • Junior**  
**Springfield, Mo.**  
**Parkview High**



- First-team all-state selection as both a junior and senior at Parkview High in Springfield
- Averaged at least 20.8 points in each of her final three prep seasons, with 1,885 total in her career
- First Springfield native on the MSU roster since the 2006-07 season
- Started 50 consecutive games when healthy
- One of six players in MSU history to start at least 30 games as a true freshman. Others are Lisa Davies (33), Christiana Shorter (33), LaTanya Davis (32), Casey Garrison (30) and Jackie Stiles (30).

#### 2016-17 Game-By-Game for Buckley

Opponent	GS	Min.	FG-A	3FG-A	FT-A	O-D-R	PF	A	TO	BS	S	PTS
at Memphis	*	28	2-4	0-0	1-2	0-2-2	3	1	0	0	1	5
at Kansas	*	10	2-3	1-2	5-6	0-2-2	4	0	1	0	0	10
at Northwestern	*	24	3-7	0-2	3-4	2-6-8	1	1	0	1	0	9
vs. USC	*	23	1-6	0-0	10-14	6-1-7	2	0	1	0	1	12
at AK Anchorage	*	28	4-8	0-1	4-4	2-2-4	2	4	6	0	1	12
Little Rock	*	31	4-11	1-2	0-2	2-2-4	2	0	4	0	0	9
at Missouri	*	24	0-8	0-1	0-0	3-2-5	3	0	3	0	0	0
at Oral Roberts	*	30	4-9	0-1	2-2	1-2-3	3	0	1	0	1	10
Arkansas	*	32	3-6	1-1	7-9	6-2-8	2	1	1	0	1	14
North Texas												
Middle Tennessee												
UNI*												
Drake*												
Wichita State*												
at Evansville*												
at Southern Illinois*												
Illinois State*												
Bradley*												
at Loyola*												
at Indiana State*												
at Wichita State*												
Southern Illinois*												
Evansville*												
at Bradley*												
at Illinois State*												
Indiana State*												
Loyola*												
at Drake*												
at UNI*												

#### Career Miscellaneous

Category	Games	Category	Games
Games played	53	5+ FTA	11
Games started	50	5+ rebounds	11
Double-figure points	8	20+ minutes played	37



### Alexa Willard

**22**

**Guard**  
**6-2 • Freshman**  
**Lebanon, Mo.**  
**Stoutland High**



- Most accurate free throw shooter in Missouri high school history with 466 career makes at 89.2 percent
- Owns made free throw streaks of 42 (state record) and 31 (top 10 in state history)
- Scored over 2,400 points and grabbed nearly 1,000 rebounds at Stoutland High

#### 2016-17 Game-By-Game for Willard

Opponent	GS	Min.	FG-A	3FG-A	FT-A	O-D-R	PF	A	TO	BS	S	PTS
at Memphis	*	24	6-10	1-3	0-0	5-1-6	1	2	0	0	0	13
at Kansas	*	21	2-4	0-0	2-2	0-2-2	2	0	4	0	1	6
at Northwestern	*	20	1-4	0-1	2-2	0-1-1	3	1	3	1	2	4
vs. USC	*	25	2-7	0-1	0-0	0-3-3	0	2	0	0	1	4
at AK Anchorage	*	21	3-7	1-3	0-0	0-0-0	1	1	0	0	0	7
Little Rock	*	16	1-3	0-1	0-0	1-4-5	1	1	2	0	0	2
at Missouri	*	19	1-4	0-1	2-2	0-1-1	3	1	1	0	1	4
at Oral Roberts	*	21	1-5	0-0	3-4	0-3-3	1	0	3	0	0	5
Arkansas	*	30	2-4	0-1	1-2	1-6-7	1	0	4	2	0	5
North Texas												
Middle Tennessee												
UNI*												
Drake*												
Wichita State*												
at Evansville*												
at Southern Illinois*												
Illinois State*												
Bradley*												
at Loyola*												
at Indiana State*												
at Wichita State*												
Southern Illinois*												
Evansville*												
at Bradley*												
at Illinois State*												
Indiana State*												
Loyola*												
at Drake*												
at UNI*												

## Player Profiles



### Shameka Ealy

**30**

**Forward**  
**6-1 - Freshman**  
**Russellville, Ark.**  
**Russellville High**



- Four-year starter and two-time all-state pick at Russellville High
- Led Russellville to state title game as a senior while averaging 22 points, 11 rebounds and nine blocks per game
- Won multiple conference championships on her high school volleyball team

#### 2016-17 Game-By-Game for Ealy

Opponent	GS	Min.	FG-A	3FG-A	FT-A	O-D-R	PF	A	TO	BS	S	PTS
at Memphis	3	0-1	0-1	0-0	0-0-0	1	0	0	0	0	0	0
at Kansas	10	1-4	0-1	0-0	1-2-3	0	0	0	0	0	0	2
at Northwestern	20	4-9	2-5	0-0	0-5-5	0	0	1	1	0	10	
vs. USC	14	1-2	1-2	0-0	1-5-6	2	0	1	1	0	3	
at AK Anchorage	8	1-2	0-0	0-0	0-1-1	1	1	2	2	1	2	
Little Rock	13	0-3	0-0	0-0	0-1-1	2	1	0	1	0	0	
at Missouri	18	3-12	2-4	0-0	3-2-5	5	1	3	0	0	8	
at Oral Roberts	14	2-5	1-1	0-0	2-6-8	3	1	1	2	0	5	
Arkansas	12	0-2	0-1	2-2	0-1-1	2	0	2	1	0	2	
North Texas												
Middle Tennessee												
UNI*												
Drake*												
Wichita State*												
at Evansville*												
at Southern Illinois*												
Illinois State*												
Bradley*												
at Loyola*												
at Indiana State*												
at Wichita State*												
Southern Illinois*												
Evansville*												
at Bradley*												
at Illinois State*												
Indiana State*												
Loyola*												
at Drake*												
at UNI*												



### Rachel Swartz

**34**

**Forward**  
**6-3 - Senior**  
**Stanwood, Wash.**  
**Stanwood High**



- High school team improved its record each year she was on the roster, going 25-3 her senior season
- Set the Stanwood High record with 20 rebounds in one game
- Averaged a double-double as both a junior and senior
- Made first career start Feb. 27, 2014 at Southern Illinois, scoring six points in 19 minutes
- First career double-figure scoring game came Jan. 16, 2015 at Loyola, with 10 points, all in the second half
- Made 20 of last 24 free throws dating to Feb. 7, 2016
- Averaged 10.3 rebounds per 40 minutes as a junior

#### 2016-17 Game-By-Game for Swartz

Opponent	GS	Min.	FG-A	3FG-A	FT-A	O-D-R	PF	A	TO	BS	S	PTS
at Memphis	*	21	2-4	0-0	0-0	0-1-1	3	0	0	0	0	4
at Kansas	*	16	0-2	0-0	0-0	2-4-6	1	0	3	0	0	0
at Northwestern	*	20	3-7	0-0	4-4	5-4-9	2	0	1	0	0	10
vs. USC	*	26	1-6	1-1	2-2	0-1-1	1	0	2	1	0	5
at AK Anchorage	*	21	1-1	0-0	0-0	1-1-2	4	1	3	1	0	2
Little Rock	*	21	2-5	0-1	0-0	1-1-2	3	0	2	0	1	4
at Missouri	*	19	1-2	0-0	2-4	2-1-3	1	0	1	0	0	4
at Oral Roberts	*	19	5-8	0-0	0-0	3-2-5	4	1	1	1	0	10
Arkansas	*	26	3-6	0-0	0-0	3-7-10	3	0	1	3	0	6
North Texas												
Middle Tennessee												
UNI*												
Drake*												
Wichita State*												
at Evansville*												
at Southern Illinois*												
Illinois State*												
Bradley*												
at Loyola*												
at Indiana State*												
at Wichita State*												
Southern Illinois*												
Evansville*												
at Bradley*												
at Illinois State*												
Indiana State*												
Loyola*												
at Drake*												
at UNI*												

#### Career Miscellaneous

Category	Games	Category	Games
Games played	102	Double-figure rebounds	1
Games started	20	4+ rebounds	25
Double-figure points	3		

## Player Profiles



### Onye Osemenam

**40**

**Forward**

**6-3 - Senior**

**Brooklyn Park, Minn.**

**Maranatha Christian Academy**



- Second in Minnesota girls basketball history in career blocked shots
- Three-time all-state selection and two-time Class A state championship winner
- First-team all-conference following each of her four prep seasons
- Averaged a double-double for her high school career
- Averages 2.12 blocks per 40 minutes for her career
- Ranks 18th in MSU history with 47 career blocked shots

#### 2016-17 Game-By-Game for Osemenam

Opponent	GS	Min.	FG-A	3FG-A	FT-A	O-D-R	PF	A	TO	BS	S	PTS
at Memphis	6	0-0	0-0	0-0	0-0-0	1	0	1	0	0	0	0
at Kansas	15	0-0	0-0	0-0	0-1-1	3	1	1	0	0	0	0
at Northwestern					DNP							
vs. USC					DNP							
at AK Anchorage					DNP							
Little Rock					DNP							
at Missouri					DNP							
at Oral Roberts					DNP							
Arkansas					DNP							
North Texas												
Middle Tennessee												
UNI*												
Drake*												
Wichita State*												
at Evansville*												
at Southern Illinois*												
Illinois State*												
Bradley*												
at Loyola*												
at Indiana State*												
at Wichita State*												
Southern Illinois*												
Evansville*												
at Bradley*												
at Illinois State*												
Indiana State*												
Loyola*												
at Drake*												
at UNI*												

#### Career Miscellaneous

Category	Games	Category	Games
Games played	92	4+ rebounds	11
Games started	1	20+ minutes played	3
2+ blocks	10		



### Emily Gartner

**50**

**Center**

**6-4 - Freshman**

**Hiawatha, Kan.**

**Hiawatha High**



- Became Hiawatha High's career leader in points and rebounds during her junior season
- Shot 69 percent or better from the floor as both a junior and senior
- Kansas state discus champion in 2015 with a throw of 151'6"
- Will likely redshirt the 2016-17 season

#### 2016-17 Game-By-Game for Gartner

Opponent	GS	Min.	FG-A	3FG-A	FT-A	O-D-R	PF	A	TO	BS	S	PTS
at Memphis										DNP		
at Kansas										DNP		
at Northwestern										DNP		
vs. USC										DNP		
at AK Anchorage										DNP		
Little Rock										DNP		
at Missouri										DNP		
at Oral Roberts										DNP		
Arkansas										DNP		
North Texas												
Middle Tennessee												
UNI*												
Drake*												
Wichita State*												
at Evansville*												
at Southern Illinois*												
Illinois State*												
Bradley*												
at Loyola*												
at Indiana State*												
at Wichita State*												
Southern Illinois*												
Evansville*												
at Bradley*												
at Illinois State*												
Indiana State*												
Loyola*												
at Drake*												
at UNI*												

# Missouri State Single-Season Records (Superscript next to statistic indicates MVC career history for active players)

## Minutes Played

1. Kari Koch (2006)	1237
2. Sarah Klaassen (2006)	1213
3. Casey Garrison (2010)	1183
4. Jackie Stiles (2001)	1169
5. Casey Garrison (2011)	1164
6. Jenni Lingor (2005)	1131
7. Kari Koch (2003)	1105
8. Tara Mitchem (2001)	1103
9. Jackie Stiles (2000)	1093
10. Jaleshia Roberson (2010)	1076

## Points

1. Jackie Stiles (2001)	1062
2. Jackie Stiles (2000)	890
3. Jackie Stiles (1999)	823
4. Jenni Lingor (2005)	660
5. Casey Garrison (2010)	658
6. Kari Koch (2006)	646
7. Casey Garrison (2011)	636
8. Jackie Stiles (1998)	618
9. Jeanette Tendai (1984)	597
10. Melody Howard (1993)	587
11. Melody Howard (1994)	572
12. Tyonna Snow (2016)	570
13. Kari Koch (2004)	568
14. LaWaynta Dawson (1991)	520
15. Tahnee Balerio (2007)	519
16. Jeanette Tendai (1985)	518
17. Kenzie Williams (2015)	509
18. Casey Garrison (2012)	501
19. Lynn Strubberg (1981)	500
20. Gail Beck (1981)	497
21. Roshonda Reed (1999)	493
22. Melody Howard (1992)	489
23. Jeanette Tendai (1986)	482
24. Casey Garrison (2009)	476
25. Kenzie Williams (2016)	475

## Scoring Average

1. Jackie Stiles (2001)	30.3
2. Jackie Stiles (2000)	27.8
3. Jackie Stiles (1999)	25.7
4. Jeanette Tendai (1984)	21.3
5. Jackie Stiles (1998)	20.6
6. Kari Koch (2006)	20.2
7. Jenni Lingor (2005)	20.0
8. Casey Garrison (2010)	19.9
9. Cindy Henderson (1975)	19.4
10. Melody Howard (1994)	19.1

## Rebounds

1. Roshonda Reed (1999)	320
2. Lynn Strubberg (1982)	301
3. Lynn Strubberg (1981)	296
4. Tiff Terwelp (2008)	284
5. Jeanette Tendai (1984)	280
6. Christiana Shorter (2011)	279
7. Cindy Henderson (1975)	265
8. Sandy Meyer (1981)	252
9. Lynne Miller (1982)	250
10. Jeanette Tendai (1985)	247

## Rebound Average

1. Cindy Henderson (1975)	11.0
2. Lynn Strubberg (1980)	10.3
3. Jeanette Tendai (1984)	10.0
Roshonda Reed (1999)	10.0
5. Lynn Strubberg (1981)	9.55
6. Cindy Henderson (1974)	9.52
7. Tiff Terwelp (2008)	9.46
8. Lynn Strubberg (1982)	9.1
9. Jeanette Tendai (1986)	9.0
10. Jeanette Tendai (1985)	8.8

## Field Goals

1. Jackie Stiles (2001)	365
2. Jackie Stiles (2000)	297
3. Jackie Stiles (1999)	288
4. Jeanette Tendai (1984)	247
5. Casey Garrison (2010)	234
6. LaWaynta Dawson (1991)	218
6. Jenni Lingor (2005)	217
7. Casey Garrison (2011)	214
Jeanette Tendai (1985)	214
9. Kari Koch (2006)	211
10. Melody Howard (1994)	210
Jackie Stiles (1998)	210

## Field Goal Attempts

1. Jackie Stiles (2001)	645
2. Jackie Stiles (2000)	595
3. Jackie Stiles (1999)	544
4. Kari Koch (2006)	513
5. Casey Garrison (2011)	505
6. Cindy Castillon (1982)	490
7. Casey Garrison (2010)	485
8. Melody Howard (1994)	467
9. Jeanette Tendai (1984)	466
10. Melody Howard (1993)	451

## Field Goal Percentage

1. Tonya Baucom (1992)	.658
2. Sharon Zeilmann (1984)	.645
3. Tonya Baucom (1993)	.628
4. Sharon Zeilmann (1987)	.604
5. Hannah Kirk (2005)	.602
6. Ann Cavey (2002)	.596
7. Joanie French (1978)	.586
8. Kelly Mago (1988)	.585
9. LaTanya Davis (1994)	.578
10. LaWaynta Dawson (1991)	.572

## Free Throws Made

1. Jackie Stiles (2001)	267
2. Jackie Stiles (2000)	238
3. Jessie McVay (1997)	185
4. Jackie Stiles (1999)	181
5. Tyonna Snow (2016)	168
Casey Garrison (2011)	168
7. Jackie Stiles (1998)	166
8. Casey Garrison (2010)	158
9. Tara Mitchem (2001)	149
10. Lisa Davies (1998)	143
Jenni Lingor (2005)	143

## Free Throw Attempts

1. Jackie Stiles (2001)	301
2. Jackie Stiles (2000)	277
3. Tyonna Snow (2016)	241
4. Jessie McVay (1997)	232
5. Jackie Stiles (1999)	216
6. Tyonna Snow (2014)	212
7. Jackie Stiles (1998)	203
8. Christiana Shorter (2012)	192
9. Casey Garrison (2010)	189
10. Casey Garrison (2011)	187

## Free Throw Percentage

1. Karly Buer (2013)	.907
2. Tina Robbins (1993)	.903
3. Casey Garrison (2011)	.8984
4. Tara Mitchem (2001)	.8975
5. Kari Koch (2004)	.892
6. Jackie Stiles (2001)	.887
7. Karly Buer (2012)	.881
8. Kari Koch (2006)	.8704
9. Sarah Klaassen (2003)	.8696
10. Marla Douglass (1987)	.868

## 3-Point Field Goals

1. Melody Howard (1994)	104
2. Jaleshia Roberson (2010)	91
3. Jenni Lingor (2005)	83
Kari Koch (2006)	83
Jaleshia Roberson (2012)	83
6. Kari Koch (2004)	75
7. K.C. Cowgill (2005)	74
8. Jenni Lingor (2003)	71
9. Melody Howard (1993)	67
10. Jackie Stiles (1999)	66

## 3-Point Field Goal Attempts

1. Jaleshia Roberson (2012)	240
2. Melody Howard (1994)	239
3. Jaleshia Roberson (2010)	229
Kari Koch (2006)	229
5. Jenni Lingor (2005)	193
6. Jaleshia Roberson (2011)	186
7. Kari Koch (2004)	176
8. Jenni Lingor (2003)	175
9. Tahnee Balerio (2007)	162
10. Kenzie Williams (2016)	161

## Assists

1. Tina Robbins (1994)	213
2. Erica Vicente (2002)	208
3. Gail Beck (1982)	187
4. Gail Beck (1981)	181
5. Amy Nelson (1989)	173
6. Amy Nelson (1992)	168
7. Casey Garrison (2010)	167
8. Nel Patton (1988)	159
9. Tina Robbins (1993)	157
10. Melody Campbell (2000)	156

## Steals

1. Tyonna Snow (2016)	109
2. Tina Robbins (1994)	108
3. Secelia Winkfield (1993)	105
4. Kari Koch (2003)	97
5. Lisa Davies (1998)	94
6. Tyonna Snow (2014)	93
Carly Deer (2000)	93
8. Casey Garrison (2010)	90
Jessie McVay (1997)	90
10. Jessie McVay (1996)	88
Carly Deer (2001)	88

## Blocked Shots

1. Tia Mays (2011)	107
2. Sharon Zeilmann (1985)	75
Sharon Zeilmann (1987)	75
4. Sharon Zeilmann (1984)	48
5. Breton Wyatt (2007)	45
6. Breton Wyatt (2006)	43
7. Tyonna Snow (2016)	39
8. Christiana Shorter (2010)	37
Kimberly McDowell (1999)	37
10. Kelly Mago (1986)	34

## Personal Fouls

1. Sandy Meyer (1981)	122
2. Terri Thomas (1981)	111
3. Erika Rante (2001)	109
4. Nanne Jackson (1994)	108
5. Christiana Shorter (2010)	107
Christiana Shorter (2012)	107
Kimberly Scoggin (1988)	107
8. Tonya Baucom (1992)	106
Charitee Longstreth (1995)	106
Kelly Mago (1986)	106

# Missouri State Career Records (Superscript next to statistic indicates MVC career history for active players)

## Games Played

1. Lacey Boshe (2009-12)	131
2. Casey Garrison (2009-12)	130
3. Jackie Stiles (1998-01)	129
4. Christiana Shorter (2010-13)	128
Sarah Klaassen (2003-06)	128
Jaleshia Roberson (2009-12)	128
7. Melody Howard (1991-94)	127
8. Carly Deer (1998-01)	126
9. LaTanya Davis (1993-96)	125
Regan Soldner (2009-12)	125

## Points

1. Jackie Stiles (1998-01)	3393
2. Casey Garrison (2009-12)	2271
3. Kari Koch (2002-06)	2073
4. Melody Howard (1991-94)	1944
5. Jenni Lingor (2002-05)	1884
6. Jeanette Tendai (1983-86)	1769
7. Kenzie Williams (2012-16)	1645
8. Lynn Strubberg (1980-83)	1641
9. Tyonna Snow (2013-16)	1611
10. Roshonda Reed (1996-99)	1540
11. Kelly Mago (1985-88)	1482
12. Lisa Davies (1995-98)	1469
13. Christiana Shorter (2010-13)	1459
14. Cindy Henderson (1972-75)	1392
15. Karen Rapier (1989-92)	1365
16. LaTanya Davis (1993-96)	1344
17. Secelia Winkfield (1990-93)	1333
18. Jaleshia Roberson (2009-12)	1314
19. Tahnee Balerio (2005-08)	1239
20. Tara Mitchem (1999-01)	1139
21. Tina Robbins (1991-94)	1098
22. Sharon Zeilmann (1983-87)	1065
23. Cindy Castillon (1981-83)	1053
24. Sarah Klaassen (2002-06)	1045
25. Jasmine Malone (09-12)	1000
26. Tiff Terwelp (2005-08)	986
27. Gail Beck (1981-82)	965
28. Lynne Miller (1982-84)	891
Kimberly Scoggin (1987-91)	891
30. Sandy Meyer (1978-81)	889
39. <b>Liza Freundt (2015-pr.)</b>	<b>774</b>
49. <b>Lexi Hughes (2014-pr.)</b>	<b>653</b>

## Scoring Average

1. Jackie Stiles (1998-01)	26.1
2. Casey Garrison (2009-12)	17.5
3. Kari Koch (2002-06)	17.0
4. Jeanette Tendai (1983-86)	16.1
5. Melody Howard (1991-94)	15.3
6. Jenni Lingor (2002-05)	15.2
7. LaWaynta Dawson (1990-91)	14.9
8. Cindy Henderson (1972-75)	14.8
9. Lynn Strubberg (1980-83)	14.3
10. Jessie McVay (1996-97)	14.2

## Rebounds

1. Lynn Strubberg (1980-83)	1048
2. Cindy Henderson (1972-75)	965
3. Christiana Shorter (2010-13)	911
4. Jeanette Tendai (1983-86)	910
5. Roshonda Reed (1996-99)	881
6. Tiff Terwelp (2005-08)	842
7. Lisa Davies (1995-98)	792
8. Casey Garrison (2009-12)	791
9. Jenni Lingor (2002-05)	699
10. Kelly Mago (1985-88)	696

## Rebound Average

1. Cindy Henderson (1972-75)	10.0
2. Lynn Strubberg (1980-83)	9.1
3. Jeanette Tendai (1983-86)	8.3
4. Roshonda Reed (1996-99)	7.9
5. Christiana Shorter (2010-13)	7.1
6. Tiff Terwelp (2005-08)	7.0
7. LaWaynta Dawson (1990-91)	6.9
8. Lisa Davies (1995-98)	6.6
9. Lynne Miller (1982-84)	6.5
10. Kelly Mago (1985-88)	6.4

## Field Goals

1. Jackie Stiles (1998-01)	1160
2. Casey Garrison (2009-12)	792
3. Jeanette Tendai (1983-86)	726
4. Melody Howard (1991-94)	716
5. Kari Koch (2002-06)	709
6. Lynn Strubberg (1980-83)	643
7. Kelly Mago (1985-88)	640
8. Roshonda Reed (1996-99)	619
9. Jenni Lingor (2002-05)	615
10. Kenzie Williams (2012-16)	558

## Field Goal Attempts

1. Jackie Stiles (1998-01)	2188
2. Casey Garrison (2009-12)	1748
3. Kari Koch (2002-06)	1604
4. Melody Howard (1991-94)	1527
5. Jeanette Tendai (1983-86)	1468
6. Kenzie Williams (2012-16)	1381
7. Roshonda Reed (1996-99)	1362
8. Tyonna Snow (2013-16)	1318
9. Jenni Lingor (2002-05)	1306
10. Lynn Strubberg (1980-83)	1259

## Free Throws

1. Jackie Stiles (1998-01)	852
2. Casey Garrison (09-12)	558
3. Tyonna Snow (2013-16)	495
4. Lisa Davies (1995-98)	436
5. Tara Mitchem (1999-01)	399
6. Jenni Lingor (2002-05)	389
7. Kari Koch (2002-06)	384
8. Christiana Shorter (2010-13)	371
9. Lynn Strubberg (1980-83)	355
10. Kenzie Williams (2012-16)	345

## Free Throw Attempts

1. Jackie Stiles (1998-01)	997
2. Tyonna Snow (2013-16)	763
3. Christiana Shorter (2010-13)	671
4. Casey Garrison (2009-12)	656
5. Lisa Davies (1995-98)	574
6. Lynn Strubberg (1980-83)	515
7. Jenni Lingor (2002-05)	485
8. Tara Mitchem (1998-01)	483
9. Kari Koch (2002-06)	448
10. Kenzie Williams (2012-16)	444

## Free Throw Percentage

1. K.C. Cowgill (2004-05)	.944
2. Sarah Klaassen (2002-06)	.882
3. Maria Douglass (1986-87)	.860
4. Kari Koch (2002-06)	.857
5. Casey Garrison (2009-12)	.851
6. Jackie Stiles (1998-01)	.850
7. Charity Shira (1991-92)	.839
8. Karly Buer (2011-14)	.831
Jasmine Malone (2009-12)	.831
10. Tara Mitchem (1999-01)	.824

## 3-Point Field Goals

1. Kari Koch (2002-06)	271
2. Jenni Lingor (2002-05)	265
3. Jaleshia Roberson (2009-12)	262
4. Melody Howard (1991-94)	258
5. Jackie Stiles (1998-01)	221
6. Kenzie Williams (2012-16)	184
7. Sarah Klaassen (2002-06)	149
8. K.C. Cowgill (2003-05)	139
Tahnee Balerio (2005-08)	139
10. Melissa Busby (2007-10)	136
11. <b>Lexi Hughes (2014-pr.)</b>	<b>129</b>
15. <b>Liza Freundt (2015-pr.)</b>	<b>119</b>

## 3-Point Field Goal Attempts

1. Jaleshia Roberson (2009-12)	779
2. Kari Koch (2002-06)	677
3. Jenni Lingor (2002-05)	632
4. Melody Howard (1991-94)	588
5. Kenzie Williams (2012-16)	517
6. Jackie Stiles (1998-01)	501
7. Tahnee Balerio (2005-08)	430
8. Melissa Busby (2007-10)	416
9. Sarah Klaassen (2002-06)	395
10. <b>Lexi Hughes (2014-pr.)</b>	<b>354</b>
13. <b>Liza Freundt (2015-pr.)</b>	<b>343</b>

## 3-Point Percentage

1. K.C. Cowgill (2004-05)	.502
2. Jackie Stiles (1998-01)	.441
3. Melody Howard (1991-94)	.439
4. Jenni Lingor (2002-05)	.419
5. Nicole Lehman (2002-05)	.406
6. Kari Koch (2002-06)	.400
7. Tina Robbins (1991-94)	.391
8. Sarah Klaassen (2002-06)	.377
9. Kayli Combs (2006)	.376
10. Stephanie Thurman (1993-95)	.374
12. <b>Lexi Hughes (2014-pr.)</b>	<b>.364</b>
16. <b>Liza Freundt (2015-pr.)</b>	<b>.347</b>

## Assists

1. Tina Robbins (1991-94)	657
2. Kari Koch (2002-06)	529
3. Casey Garrison (2009-12)	525
4. Amy Nelson (1989-92)	516
5. Secelia Winkfield (1990-93)	455
6. Tahnee Balerio (2005-08)	420
7. Jenni Lingor (2002-05)	386
8. Gail Beck (1981-82)	368
9. Melody Howard (1991-94)	356
10. Erica Vicente (2001-02)	354

## Steals

1. Tyonna Snow (2013-16)	352
2. Kari Koch (2002-06)	340
3. Tina Robbins (1991-94)	316
4. Secelia Winkfield (1990-93)	302
5. Casey Garrison (2009-12)	264
6. Carly Deer (1998-01)	260
7. Lisa Davies (1995-98)	241
8. LaTanya Davis (1993-96)	215
9. Kenzie Williams (2012-16)	212
10. Melody Howard (1991-94)	206

## Blocked Shots

1. Sharon Zeilmann (1983-87)	221
2. Christiana Shorter (2010-13)	109
3. Tia Mays (2011)	107
4. Breton Wyatt (2006-07)	96
5. Kelly Mago (1985-88)	84
6. Carly Deer (1998-01)	73
7. Tyonna Snow (2013-16)	72
8. Stephanie Busbey (2000-04)	69
9. Casey Garrison (2009-12)	67
Whitney Edie (2010-13)	67
18. <b>Onye Osemenam (2014-pr.)</b>	<b>47</b>
27. <b>Audrey Holt (2015-pr.)</b>	<b>30</b>

## TV/Radio Roster



**Kellie Harper**  
Head Coach  
Fourth Year



**Jon Harper**  
Assistant Coach  
Fourth Year



**Jackie Stiles**  
Assistant Coach  
Fourth Year



**Jennifer Sullivan**  
Assistant Coach  
Fourth Year



**Matt Bolger**  
Director of Basketball Operations  
First Year



**1** **Danielle Gitzen**  
5-10 - G - So.  
Victoria, Minn.  
Chanhassen High



**2** **Lexi Hughes**  
5-8 - G - Sr.  
Kansas City, Kan.  
Bishop Miege High



**3** **Lee Ann Polowy**  
5-7 - G - Jr.  
Jefferson City, Mo.  
Blair Oaks High



**5** **Liza Fruendt**  
5-10 - G - Jr.  
Batavia, Ill.  
Batavia High



**11** **Brice Calip**  
5-8 - G - Fr.  
Sapulpa, Okla.  
Sapulpa High



**13** **Audrey Hoyt**  
6-1 - F - Jr.  
Columbia, Mo.  
Rock Bridge High



**21** **Aubrey Buckley**  
6-2 - F - Jr.  
Springfield, Mo.  
Parkview High



**22** **Alexa Willard**  
6-2 - G - Fr.  
Lebanon, Mo.  
Stoutland High



**30** **Shameka Ealy**  
6-1 - F - Fr.  
Russellville, Ark.  
Russellville High



**34** **Rachel Swartz**  
6-3 - F - Sr.  
Stanwood, Wash.  
Stanwood High



**40** **Onye Osemenam**  
6-3 - F - Jr.  
Brooklyn Park, Minn.  
Maranatha Christian Academy



**50** **Emily Gartner**  
6-4 - C - Fr.  
Hiawatha, Kan.  
Hiawatha High